

LGMG

HA735

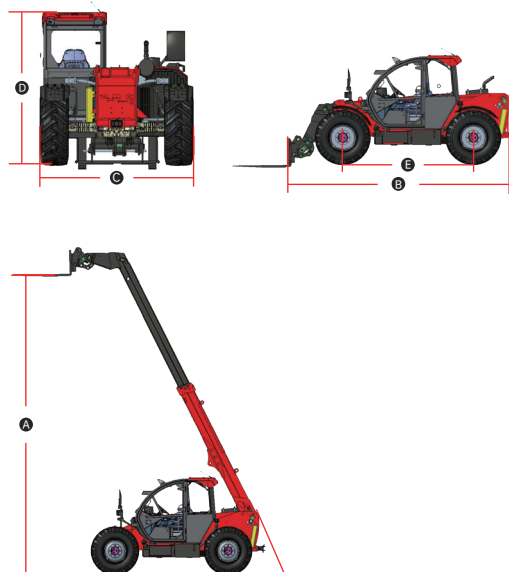
TELEHANDLER



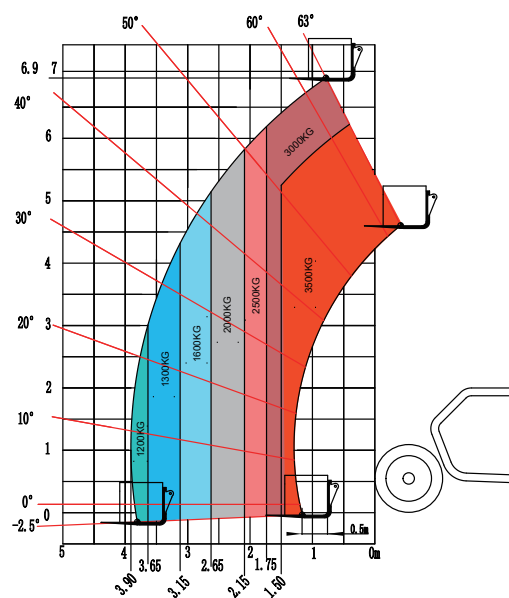
LGMG TELEHANDLER

SPECIFICATIONS

MODELS	HA735	
Measurements	Metric	Imperial
A Max. Lifting Height	6.9m	22'8"
Max. Outreach	3.9m	12'10"
B Overall Length	5.08m	16'8"
C Overall Width	2.41m	7'11"
D Overall Height	2.48m	8'2"
E Wheelbase	2.9m	9'6"
Ground Clearance	0.4m	1'4"
PRODUCTIVITY		
Max. Capacity	3,500kg	7,716 lbs
Gradeability-Unladen	45%	
Min. Turning Radius	4.1m	13'5"
Tilt Angle	±5°	
Drive /Steering Mode	4 Wheel Drive / 4 Wheel Steer	
Primary Boom Ascending Time	6s	
Primary Boom Descending Time	6s	
Boom Extending Time	6.5s	
Boom Retracting Time	5s	
Forward - First Gear Travel Speed	6km/h	3.7mph
Forward - Second Gear Travel Speed	13km/h	8.1mph
Forward - Third Gear Travel Speed	27km/h	16.8mph
Forward - Fourth Gear Travel Speed	40km/h	24.9mph
Backward - First Gear Travel Speed	6km/h	3.7mph
Backward - Second Gear Travel Speed	13km/h	8.1mph
Backward - Third Gear Travel Speed	26km/h	16.2mph
Braking	Multi-disc wet brake of front and rear axles	
Standard Tyres	460/70 R24	
ENGINE		
Manufacturer	Perkins	
Rated Power	90kW	120.69hp
Max. Torque	500N.m	368 lb.ft
Displacement	3,621ml	221 cu.in
TANK CAPACITIES		
Fuel Tank Capacity	130L	34.3gal
Hydraulic Oil Capacity	185L	48.9gal
WEIGHT		
Machine Weight	7,950kg	17,527 lbs



ROUGH TERRAIN LOAD CHART



Please contact LGMG or a local dealer for more details. LGMG reserves the right to change technical data without prior notice. All photos and pictures in this brochure are for promotional purposes only.

LINGONG HEAVY MACHINERY CO., LTD.

Address: No. 2676, Kejia Road, Jinan, Shandong, China

Email: sales@lmg.com.cn Tel: +86 531 6787 9283

www.lmglifts.com



LGMG

RELIABILITY IN ACTION