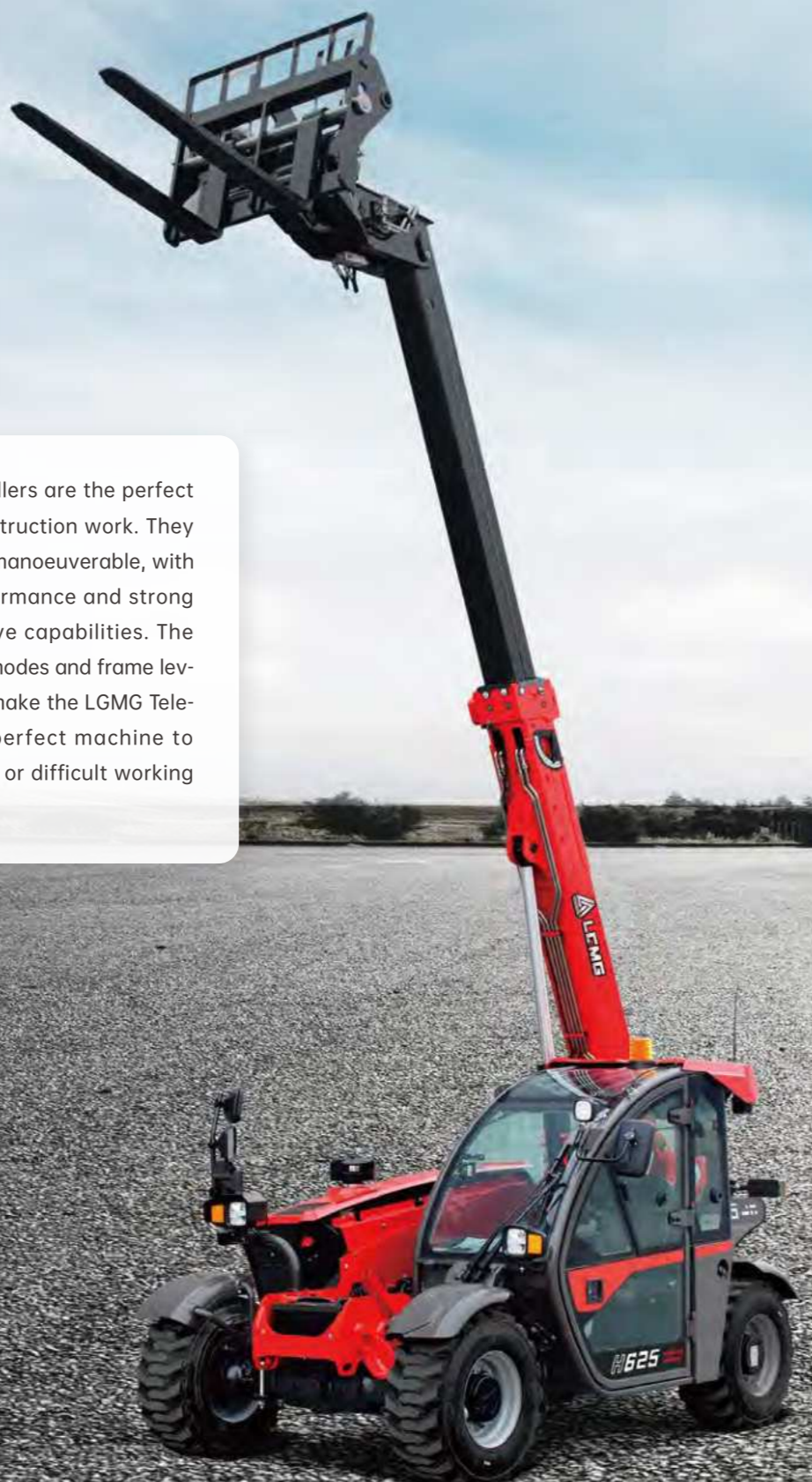


# PART 11 TELEHANDLERS

LGMG Telehandlers are the perfect choice for construction work. They are sturdy yet manoeuvrable, with excellent performance and strong four-wheel drive capabilities. The three steering modes and frame leveling function make the LGMG Telehandlers the perfect machine to tackle complex or difficult working conditions.



## SPECIFICATIONS

MODELS	H625		H735		HA735	
	Metric	Imperial	Metric	Imperial	Metric	Imperial
Measurements						
Ⓐ Max. Lifting Height	5.94m	19'6"	7m	22'10"	6.9m	22'8"
Max. Outreach	3.45m	11'4"	3.9m	12'10"	3.9m	12'10"
Ⓑ Overall Length	3.99m	13'1"	4.99m	16'4"	4.91m	16'1"
Ⓒ Overall Width	1.86m	6'1"	2.34m	7'8"	2.41m	7'11"
Ⓓ Overall Height	1.97m	6'6"	2.3m	7'7"	2.31m	7'7"
Ⓔ Wheelbase	2.3m	7'7"	2.85m	9'4"	2.9m	9'6"
Ground Clearance	0.32m	1'1"	0.43m	1'5"	0.41m	1'4"
<b>PRODUCTIVITY</b>						
Max. Capacity	2,500kg	5512 lbs	3,500kg	7,716 lbs	3,500kg	7,716 lbs
Gradeability-Unladen	45%		45%		65%	
Min. Turning Radius	3.36m	11'	3.9m	12'10"	4.1m	13'5"
Tilt Angle	±5°		±5°		±9°	
Drive /Steering Mode	4 Wheel Drive / 4 Wheel Steer		4 Wheel Drive / 4 Wheel Steer		4 Wheel Drive / 4 Wheel Steer	
Primary Boom Ascending Time	9s		7.51s		7.4s	
Primary Boom Descending Time	6.5s		5.57s		5.4s	
Boom Extending Time	6s		6.93s		7.6s	
Boom Retracting Time	4s		5.32s		4.8s	
Forward - First Gear Travel Speed	10km/h	6.2mph	9km/h	5.6mph	4.5km/h	2.8mph
Forward - Second Gear Travel Speed	24.9km/h	15.5mph	27km/h	16.8mph	9.5km/h	5.9mph
Forward - Third Gear Travel Speed	/	/	/	/	19km/h	11.8mph
Forward - Fourth Gear Travel Speed	/	/	/	/	27km/h	16.8mph
Backward - First Gear Travel Speed	10km/h	6.2mph	9km/h	5.6mph	4.5km/h	2.8mph
Backward - Second Gear Travel Speed	24.9km/h	15.5mph	27km/h	16.8mph	9.5km/h	5.9mph
Backward - Third Gear Travel Speed	/	/	/	/	19.5km/h	12.1mph
Braking	Multiple-disk brake with oil bath on front and rear axles					
Standard Tyres	12-16.5-12-TL		400/80 R24		460/70 R24	
<b>ENGINE</b>						
Manufacturer	Kubota		Kubota		Perkins	
Rated Power	54.6kW	73.2hp	54.6kW	73.2hp	73kW	97.9hp
Max. Torque	261.1N.m	192.6 ft/lbs	289.3N.m	213.4 ft/lbs	420N.m	309.8 ft/lbs
Displacement	3,331ml	203.3 cu.in	3,331ml	203.3 cu.in	3,620ml	220.9 cu.in
Maximum traction force	39KN		43KN		80KN	
<b>HYDRAULIC SYSTEM</b>						
Working pump type	Variable piston pump					
Working pump displacement	84 l/min	22 US gpm	113 l/min	30 US gpm	144 l/min	38 US gpm
<b>TANK CAPACITIES</b>						
Hydraulic Oil Capacity	75L	19.8 gal	100L	26.4gal	100L	26.4gal
Fuel Tank Capacity	63L	16.6 gal	100L	26.4gal	130L	34.3gal
<b>WEIGHT</b>						
Machine Weight	5,050kg	11,134 lbs	7,000kg	15,432 lbs	7,300kg	16,094 lbs



## SPECIFICATIONS

Models	H1440		H1840		HR2150	
	Métrique	Impériale	Métrique	Impériale	Métrique	Impériale
Measurements						
<b>A</b> Max. Lifting Height	13.6m	44'7"	17.6m	57'9"	20.7m	67'11"
Max. Outreach	9.22m	30'3"	13.1m	43'	18.1m	59'5"
<b>B</b> Overall Length	5.62m	18'5"	5.9m	19'4"	6.86m	22'6"
<b>C</b> Overall Width	2.44m	8'	2.44m	8'	2.46m	8'1"
<b>D</b> Overall Height	2.67m	8'9"	2.67m	8'9"	3.15m	10'4"
<b>E</b> Wheelbase	3.07m	10'1"	3.07m	10'1"	2.75m	9'
Ground Clearance	0.41m	1'4"	0.41m	1'4"	0.39m	1'3"
<b>PRODUCTIVITY</b>						
Max. Capacity	4,000kg	8,819 lbs	4,000kg	8,818 lbs	4,999kg	11,021 lbs
Gradeability-Unladen	65%		65%		50%	
Min. Turning Radius	4.3m	14'1"	4.3m	14'1"	3.65m	12'
Tilt Angle	±9°		±9°		±8°	
Drive /Steering Mode	4 Wheel Drive / 4 Wheel Steer					
Primary Boom Ascending Time	14s		14s		27s	
Primary Boom Descending Time	16s		16s		22s	
Boom Extending Time	22s		22s		32s	
Boom Retracting Time	15s		15s		23s	
Forward - First Gear Travel Speed	5km/h	3.1mph	5km/h	3.1mph	5km/h	3.1mph
Forward - Second Gear Travel Speed	12km/h	7.5mph	12km/h	7.5mph	30km/h	18.6mph
Forward - Third Gear Travel Speed	20km/h	12.4mph	20km/h	12.4mph	/	
Forward - Fourth Gear Travel Speed	30km/h	18.6mph	30km/h	18.6mph	/	
Backward - First Gear Travel Speed	5km/h	3.1mph	5km/h	3.1mph	5km/h	3.1mph
Backward - Second Gear Travel Speed	12km/h	7.5mph	12km/h	7.5mph	30km/h	18.6mph
Backward - Third Gear Travel Speed	20km/h	12.4mph	20km/h	12.4mph	/	
Braking	Multiple-disk brake with oil bath on front and rear axles					
Standard Tyres	440/80 R24		440/80 R24		445/70 R22.5	
<b>POWER</b>						
Manufacturer	Perkins		Perkins		Perkins	
Rated Power	74.4kW	99.8hp	74.4kW	99.8hp	106kW	142.1hp
Max. Torque	430N.m	312.5 lb.ft	430N.m	312.5 lb.ft	558N.m	411.2 lb.ft
Displacement	3,620ml	220.9 cu.in	3,620ml	220.9 cu.in	4,400ml	268.5 cu.in
Maximum traction force	93KN		93KN		96KN	
<b>HYDRAULIC SYSTEM</b>						
Working pump type	Variable piston pump					
Working pump displacement	139 l/min	37 US gpm	139 l/min	37 US gpm	132 l/min	35 US gpm
<b>TANK CAPACITIES</b>						
Hydraulic Oil Capacity	180L	47.6gal	180L	47.6gal	260L	60.7gal
Fuel Tank Capacity	150L	39.6gal	150L	39.6gal	170L	44.9gal
<b>WEIGHT</b>						
Machine Weight	12,050kg	26,566 lbs	12,350kg	27,227 lbs	17,100kg	37,699 lbs

## FEATURES

### High Power, Low Fuel Consumption

- Featured with high powerful engine for maximising material handling capacity with lower fuel consumption.

### High Ergonomics, Safety and Comfort

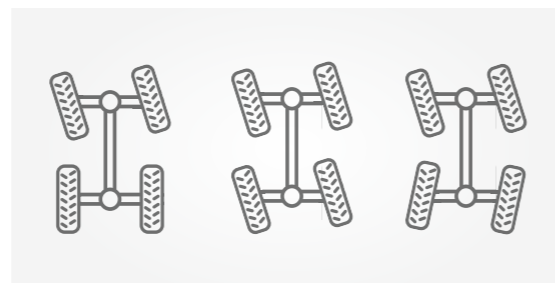
- FOPS&ROPS cab as standard, provides high effective safety on job sites.
- The standard high-capacity air conditioning system with heater, creates a comfortable and productive operator environment, which is ideal for work sites in hotter or cooler climates.
- Standard-fit LGMG fenders provide superior protection from dirt and spray.
- Excellent all-around visibility thanks to direct glazing, large roof screen and low engine house.

### Precise Operation, Intelligent Controlling

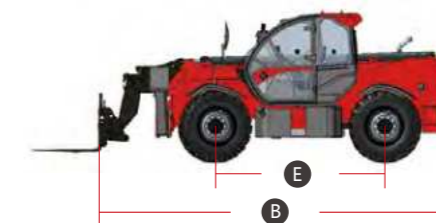
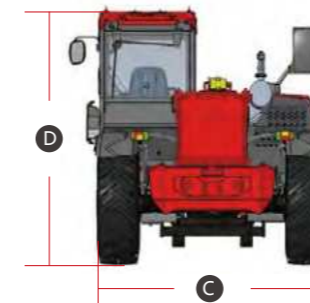
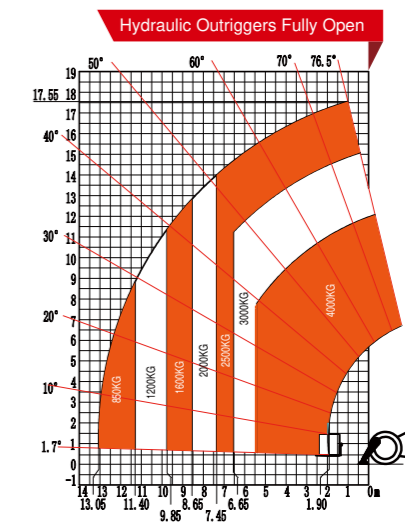
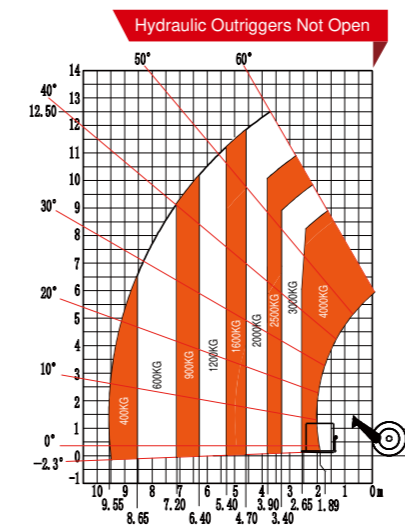
- The load-sense control system delivers high efficiency and excellent performance on different job sites.
- A large high-definition LCD screen, featuring an automa-tive-style and intuitive layout, provides a clear view and is easy to be recognized.
- An ergonomically-designed, fully proportional single-lever joy-stick delivers fast and precise control.

### Versatile and Adaptable

- The three steering modes: four-wheel steering, crab steering, and front-wheel steering, with a small turning radius, make the machine perfect for constrained and restricted job sites.
- Auxiliary hydraulic functions are fitted as standard, to accom-modate a wide range of attachments, including platform, bucket, frame-mounted hook and glass suction, for maximum versatility.

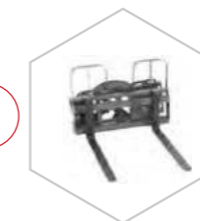


## LOAD CURVE OF H1840 UNDER RT CONDITION



Estándar Horquilla

1



Extensión Plataforma de Trabajo

2



3 General Cucharón de uso múltiple



4 Montado en bastidor Gancho

