

EXP 5020





Operators cabin with large windows for a better visibility. The front window, with double wiper, opens, completely disappearing under the top of the cab.

An orange flashing beacon, top cab lights and lights on stick are standard fitted. It is possible, as option, to fit halogen and/or led extra lights. Finally a front window screen protection is standard fitted on the machine. As option is possible to fit also a total protection for the cabin.

Comfortable drive : Well pneumatically sprung, extra large seat with 10 regulation modalities, safety seat belt with winding mechanism, adjustable arms, headrest, and seat heating.

In addition, an integrated safety device to turn on machine controls only when the operator is in driving position and the safety arm rest is in the down position. 2 taps for lower the cabin in case of emergency (one into the cabin, one easy accessible from the ground). **Standard air conditioner** with 5 vents to cool the air in the cab and to dehumidify it, avoiding windows steaming up. Heating winter and summer ventilation device are standard fitted.



The clear visual **instrumentation panel with a coloured 5" display** allows monitoring of all machines functions: engine rpm, battery voltage, fuel level, diagnostic codes, hydraulic system, liquids levels and temperatures. There are also controls dedicated to auxiliary functions and for light warnings that advise the operator when air or hydraulic oil filters are congested, or when the machine reaches stability level, highness of the grab from the ground or distance of it from the centre of the machine, total or partial hour counter, hours from the next service, list of controls to be performed during the maintenance.



The new EXP 5020 is a machine specifically developed for the material handling activities and with a new eye-catching design.

The new EXP 5020 is available from 8 to 10 meters reach and all the possible attachments for the material handling sectors: grabs for scrap, orange peel grabs, magnet plates, grab for logs, clamshell grabs, selector grabs etc.

The new EXP 5020 is the most equipped machine in its sector, the standard configuration is almost complete: working lights over the cabin and on the dipper stick, air conditioning, automatic greasing system, reversible fan, handrails and safety steps, front window screen protection, overload warning device, break valves on all the cylinders.

The other optional available, are also useful for a comfortable and safe use of the machine: radio cd player, anti-theft, total cabin protection, steering on joysticks, rear camera on counterweight with 7" coloured display into the cabin, protection for the transmission on undercarriage, generator system, etc...



Operators cabin with **hydraulic parallelogram elevation** has a 5,2 m high reach (operator's eye). It is possible, on request, to arrive to 6,0m high reach.

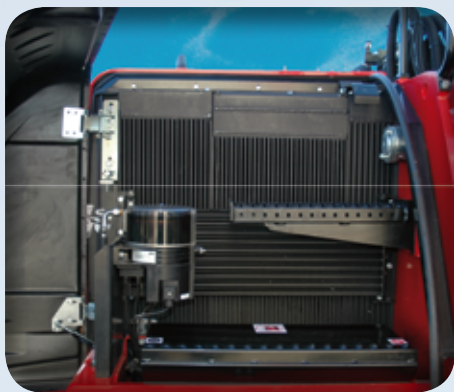


Centralized automatic greasing system (as standard), to make easier service operations.



As option, rear camera on counterweight with 7" color display into the cabin. It's also possible to fit a camera on the secondary stick.





Large radiators, in aluminium with large-meshes allow a better thermic exchange avoiding occlusion of air passages. A thermostatic reversible fan with new aerodynamics profiles of the blades is fitted as standard: less noise, less diesel consumption, radiator always clean, less heating time in wintertime, quicker heating into the cabin in wintertime.



Steps and handrails on outriggers for an easy and safe access.

Step on the blade for climbing safely



The new EXP 5020 is environmentally friendly.

The new engine 3.6 L4T4 (Tier 4) with catalyst DVERT®, ensures low environmental impact, reduced noise and vibration, low maintenance costs and low fuel consumption.

The **new cooling fan** with thermostatic control, reduces noises considerably and keeps the fluids always at the ideal temperature for a significant decrease in fuel consumption.

A device, that reverses the rotation of the fan to "blow" through the radiators and keep them clean, is installed as standard.

The new EXP5020 was designed for making easier as possible all the operations of maintenance. The large bonnets, with gas struts, can be easily raised and opened to make a quick and effective maintenance, all while preserving the safety of the operator.

The intervals of maintenance and support of **the new EXP 5020** have been extended to reduce maintenance time, increase machine availability and reduce operating costs.

The majority of grease points are easily accessible from the ground. For slew ring and for arms an automatic greasing system is fitted as standard.

The new EXP 5020 is more secure; Non-slip steps and handrails facilitate the ascent and descent of the operator from the machine.

The new EXP 5020 (in accordance with EU directive 2006/42/EC) comes standard with the "OWD" (Overload Warning Device) system that alerts the operator with a visual and acoustic signal on the dashboard when the machine has exceeded the maximum load for that position and effectively blocking the movement of the arms and agreeing only those who will bring the load in a safe position.

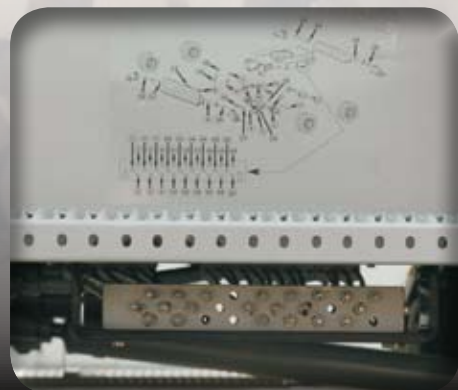


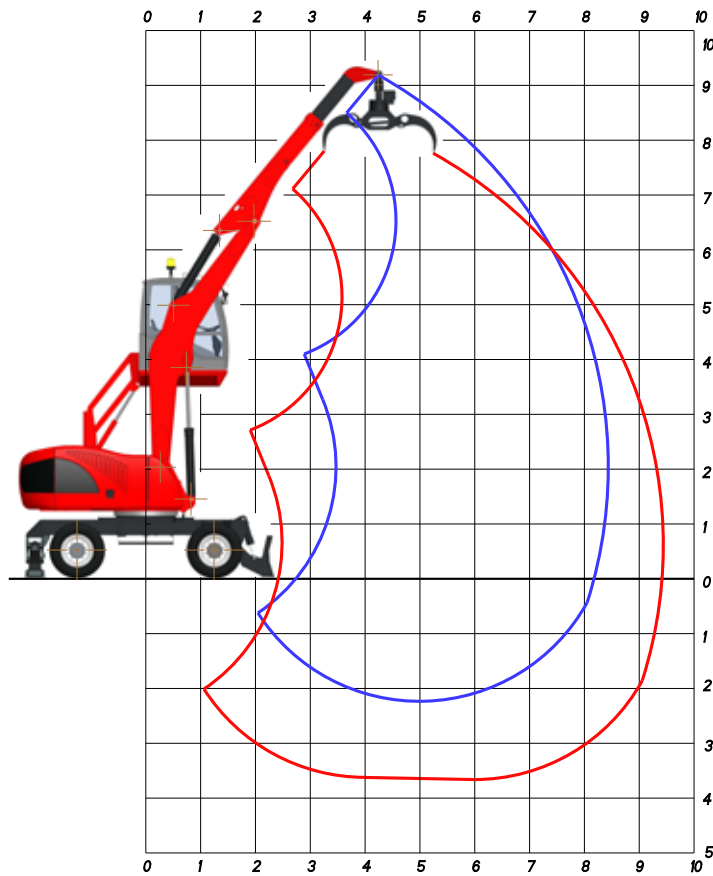
The large bonnet, ensures an extremely easy and safe access to all maintenance points.



Generator for magnet driven by a hydraulic motor and mounted on silent blocks (as option)

Centralized greasing system for the undercarriage (as option available) for an easier maintenance of the machine





AF8:
Gooseneck boom
4,80 m

Industrial stick
3,30 m

AT8:
Telescopic stick
2,60 - 3,50 m

OPERATING WEIGHT:

21.300 kg

OPERATING WEIGHT WITH, FRONT BLADE
REAR OUTRIGGERS, FULL RUBBER TYRES,
GOOSENECK BOOM 4,80 m,
TELESCOPIC STICK,
R50/604 LOGS GRAB WITH ROTATOR.

LIFTING CAPACITIES TONS

LIFTING RANGE (m)

HEIGHT METRES	CONF.	3,5			5,0			6,5			8,0			8,4		
		↗	○	⊙	↗	○	⊙	↗	○	⊙	↗	○	⊙	↗	○	⊙
8,0	○○				4,87*	4,87*	4,28									
	┌┐				4,87*	4,87*	4,24*									
	└└				4,87*	4,87*	4,24*									
6,0	○○				4,42*	4,42*	3,89	4,56*	4,07	3,05						
	┌┐				4,42*	4,42*	3,85*	4,56*	4,56*	3,97*						
	└└				4,42*	4,42*	3,85*	4,56*	4,56*	3,97*						
4,0	○○	5,46*	5,46*	4,82	4,73*	4,73*	4,16	5,06*	3,99	2,99	3,87	2,85	2,14			
	┌┐	5,46*	5,46*	4,75*	4,73*	4,73*	4,12*	5,06*	5,06*	4,40*	3,89*	3,89*	3,38*			
	└└	5,46*	5,46*	4,75*	4,73*	4,73*	4,12*	5,06*	5,06*	4,40*	3,89*	3,89*	3,38*			
2,0	○○	11,3*	8,92	6,69	7,51	5,45	4,09	5,15	3,78	2,84	3,80	2,79	2,09	3,14*	2,55	1,91
	┌┐	11,3*	11,3*	9,90*	7,88*	7,88*	6,86*	6,23*	6,23*	5,00	4,85*	4,85*	3,68	3,14*	3,14*	2,73*
	└└	11,3*	11,3*	9,90*	7,88*	7,88*	6,86*	6,23*	6,23*	5,42*	4,85*	4,85*	4,22*	3,14*	3,14*	2,73*
0,0	○○	8,66*	8,12	6,09	7,09	5,07	3,80	4,94	3,59	2,69	3,73	2,72	2,04			
	┌┐	8,66*	8,66*	7,53*	8,67*	8,67*	7,08	6,51*	6,51*	4,83	4,81*	4,81*	3,62			
	└└	8,66*	8,66*	7,53*	8,67*	8,67*	7,54*	6,51*	6,51*	5,66*	4,81*	4,81*	4,18*			
-2,0	○○	11,3*	7,96	5,97	6,93	4,92	3,69	4,87	3,52	2,64						
	┌┐	11,3*	11,3*	9,82	8,00*	8,00*	6,96*	5,75*	5,75*	4,78						
	└└	11,3*	11,3*	9,87*	8,00*	8,00*	6,96*	5,75*	5,75*	5,00*						



LIFTING CAPACITIES ON LONGITUDINAL AXIS



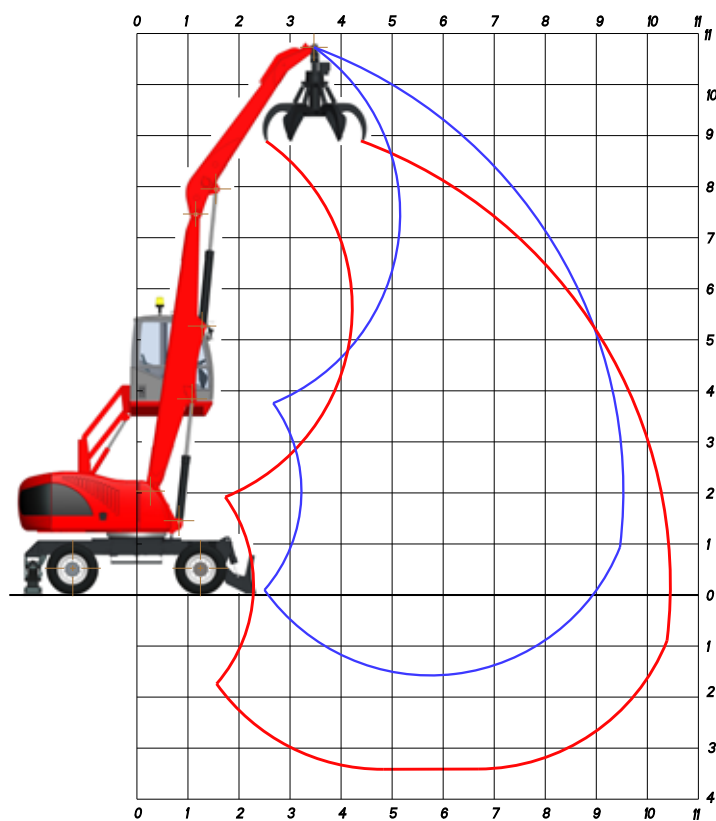
LIFTING CAPACITIES ON 360° WITHOUT SAFETY FACTOR



LIFTING CAPACITIES ON 360° ACCORDING WITH ISO 10567

*= HYDRAULIC LIMIT

LIFTING CAPACITIES ARE ON HOOK WITHOUT GRABS, MACHINE STATIC, LEVEL SOLID GROUND, WITH AXLE LOCKED.



DF10:
Straight boom
5,50 m

Industrial stick
4,00 m

OPERATING WEIGHT:

21.400 kg

OPERATING WEIGHT WITH FRONT BLADE,
REAR OUTRIGGERS, FULL RUBBER TYRES,
STRAIGHT BOOM 5.50 M,
INDUSTRIAL STICK 4.00 M,
RV 400 ORANGE PEEL GRAB WITH ROTATOR.

LIFTING CAPACITIES TONS

LIFTING RANGE (m)

HEIGHT METRES	CONF.	3,0			5,0			7,0			9,0			9,5		
		↗	○	⊙	↗	○	⊙	↗	○	⊙	↗	○	⊙	↗	○	⊙
10,0	○○				5,60*	4,99	3,74									
	┃┃				5,60*	5,60*	4,88*									
	┃┃┃				5,60*	5,60*	4,88*									
8,0	○○				6,93	5,12	3,84	4,16	3,06	2,30						
	┃┃				7,28*	7,28*	6,34*	5,33*	5,33*	4,03						
	┃┃┃				7,28*	7,28*	6,34*	5,33*	5,33*	4,64*						
6,0	○○				7,07	5,21	3,91	4,19	3,09	2,31						
	┃┃				7,94*	7,94*	6,91*	7,22*	5,40	4,05						
	┃┃┃				7,94*	7,94*	6,91*	7,22*	6,99	5,24						
4,0	○○	7,37*	7,37*	6,42*	6,70	4,87	3,65	4,05	2,96	2,22	2,76	1,99	1,49			
	┃┃	7,37*	7,37*	6,42*	10,3*	8,84	6,63	7,41	5,25	3,94	5,01	3,59	2,69			
	┃┃┃	7,37*	7,37*	6,42*	10,3*	10,3*	8,82	7,76	6,84	5,13	5,22*	4,66	3,50			
2,0	○○				6,20	4,40	3,30	3,86	2,77	2,08	2,71	1,94	1,45	2,49	1,77	1,33
	┃┃				11,5*	8,29	6,22	7,18	5,05	3,79	4,94	3,53	2,65	4,04*	3,24	2,43
	┃┃┃				11,5*	11,1	8,37	7,53	6,62	4,97	5,19	4,60	3,45	4,04*	4,04*	3,17
0,0	○○	3,79*	3,79*	3,30*	5,83	4,06	3,05	3,71	2,63	1,97	2,67	1,90	1,42			
	┃┃	3,79*	3,79*	3,30*	10,9*	7,89	5,92	7,00	4,89	3,67	4,66*	3,49	2,61			
	┃┃┃	3,79*	3,79*	3,30*	10,9*	10,7	8,04	7,35	6,45	4,84	4,66*	4,56	3,42			



LIFTING CAPACITIES ON LONGITUDINAL AXIS



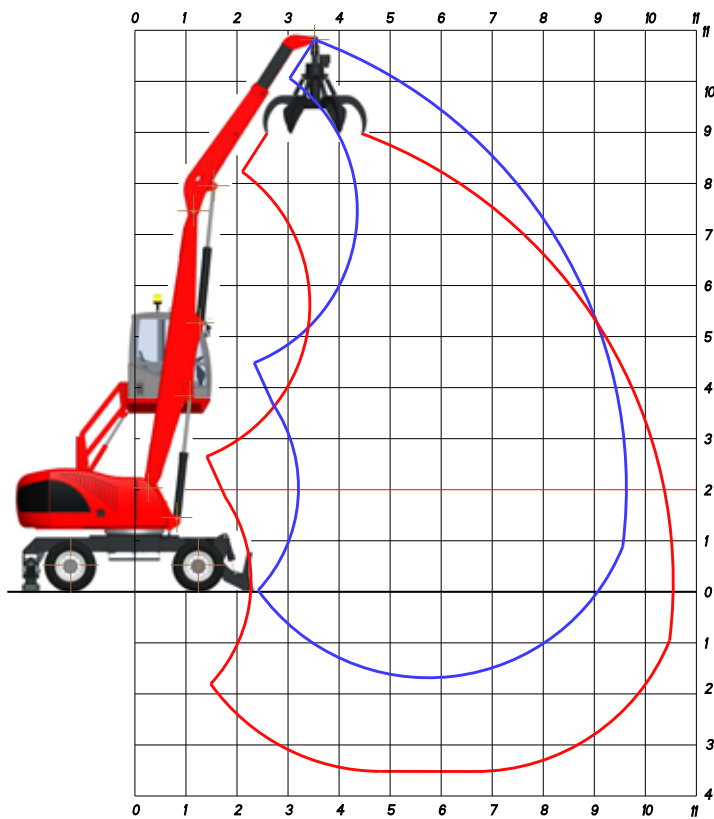
LIFTING CAPACITIES ON 360° WITHOUT SAFETY FACTOR



LIFTING CAPACITIES ON 360° ACCORDING WITH ISO 10567

*= HYDRAULIC LIMIT

LIFTING CAPACITIES ARE ON HOOK WITHOUT GRABS, MACHINE STATIC, LEVEL SOLID GROUND, WITH AXLE LOCKED.



DT10:
Straight boom
5,50 m

Telescopic stick
3,20 - 4,10 m

OPERATING WEIGHT:

21.800 kg

OPERATING WEIGHT WITH, FRONT BLADE,
REAR OUTRIGGERS, FULL RUBBER TYRES,
STRAIGHT BOOM 5,50 m,
TELESCOPIC STICK,
RV 400 ORANGE PEEL GRAB WITH ROTATOR.

LIFTING CAPACITIES TONS

LIFTING RANGE (m)

HEIGHT METRES	CONF.	3,0			5,0			7,0			9,0			9,5		
		↗	○	⊙	↗	○	⊙	↗	○	⊙	↗	○	⊙	↗	○	⊙
10,0	○○				5,67*	4,95	3,71									
	┌┐				5,67*	5,67*	4,93*									
	└└				5,67*	5,67*	4,93*									
8,0	○○				6,78	4,93	3,70	4,07	2,97	2,23						
	┌┐				8,37*	8,37*	6,69	5,27*	5,27*	3,96						
	└└				8,37*	8,37*	7,28*	5,27*	5,27*	4,58*						
6,0	○○				6,98	5,12	3,84	4,08	2,98	2,23						
	┌┐				7,63*	7,63*	6,63*	6,98*	5,28	3,96						
	└└				7,63*	7,63*	6,63*	6,98*	6,87	5,16						
4,0	○○	7,17*	7,17*	6,22*	6,60	4,76	3,57	3,93	2,84	2,13	2,65	1,88	1,41			
	┌┐	7,17*	7,17*	6,22*	9,87*	8,73	6,55	7,29	5,13	3,85	4,89	3,47	2,60			
	└└	7,17*	7,17*	6,22*	9,87*	9,87*	8,59*	7,63	6,72	5,04	5,14	4,55	3,41			
2,0	○○				6,05	4,26	3,19	3,72	2,64	1,98	2,58	1,81	1,36	2,33	1,62	1,22
	┌┐				11,3*	8,13	6,10	7,03	4,91	3,68	4,82	3,40	2,55	3,79*	3,07	2,30
	└└				11,3*	11,0	8,25	7,38	6,48	4,86	5,06	4,47	3,35	3,79*	3,79*	3,03
0,0	○○	3,11*	3,11*	2,71*	5,65	3,89	2,92	3,56	2,48	1,86	2,53	1,76	1,32			
	┌┐	3,11*	3,11*	2,71*	10,8*	7,70	5,77	6,85	4,73	3,55	4,65*	3,35	2,51			
	└└	3,11*	3,11*	2,71*	10,8*	10,5	7,89	7,19	6,30	4,72	4,65*	4,42	3,31			



LIFTING CAPACITIES ON LONGITUDINAL AXIS



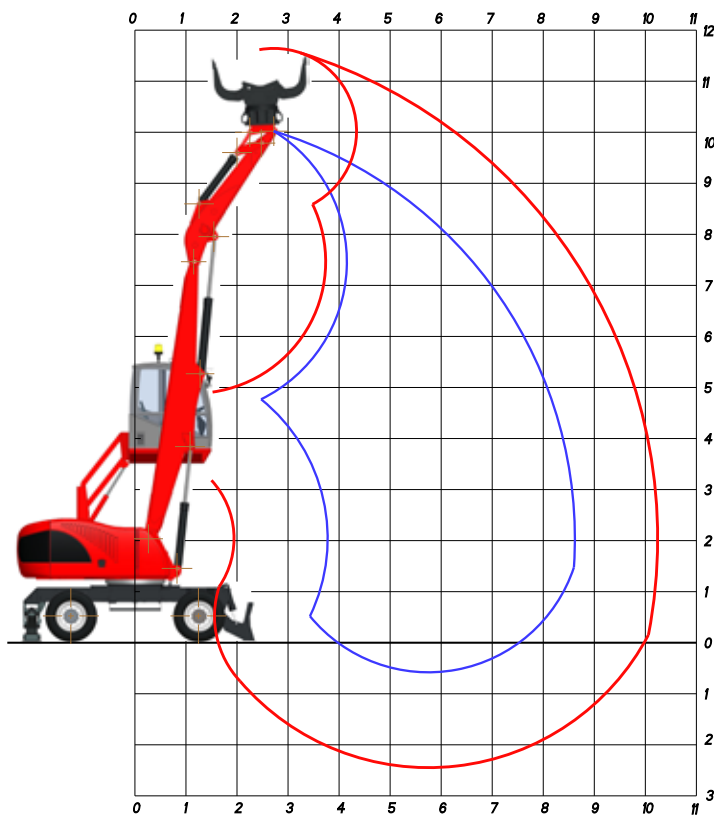
LIFTING CAPACITIES ON 360° WITHOUT SAFETY FACTOR



LIFTING CAPACITIES ON 360° ACCORDING WITH ISO 10567

*= HYDRAULIC LIMIT

LIFTING CAPACITIES ARE ON HOOK WITHOUT GRABS, MACHINE STATIC, LEVEL SOLID GROUND, WITH AXLE LOCKED.



DS9:
Straight boom
5,50 m

Selector arm
3,00 m

OPERATING WEIGHT:

21.600 kg

OPERATING WEIGHT WITH, FRONT BLADE,
REAR OUTRIGGERS, FULL RUBBER TYRES,
STRAIGHT BOOM 5,50 m,
SELECTOR ARM,
RS 500 SELECTOR GRAB WITH ROTATOR

LIFTING CAPACITIES TONS

LIFTING RANGE (m)

HEIGHT METRES	CONF.	4,0			6,0			8,0			8,6		
		↗	○	⊙	↗	○	⊙	↗	○	⊙	↗	○	⊙
8,0	○○	6,41*	5,29	3,96									
	└┐	6,41*	6,41*	5,57*									
	└┴┐	6,41*	6,41*	5,57*									
6,0	○○	6,68*	5,20	3,90	4,19	3,09	2,32						
	└┐	6,68*	6,68*	5,81*	6,51*	5,40	4,05						
	└┴┐	6,68*	6,68*	5,81*	6,51*	6,51*	5,66*						
4,0	○○	6,71	4,85	3,63	4,03	2,94	2,21	2,78	2,00	1,50			
	└┐	8,56*	8,56*	6,66	6,91*	5,23	3,92	5,00*	3,60	2,70			
	└┴┐	8,56*	8,56*	7,45*	6,91*	6,91*	6,01*	5,00*	5,00*	4,09			
2,0	○○	7,00	4,87	3,65	3,88	2,78	2,09	2,72	1,94	1,46	2,49	1,78	1,33
	└┐	11,2*	9,55	7,16	7,01*	5,09	3,82	4,93*	3,54	2,65	3,73*	3,24	2,43
	└┴┐	11,2*	11,2*	9,77*	7,01*	7,01*	6,10*	4,93*	4,93*	4,04	3,73*	3,73*	3,24*
0,0	○○	7,40	5,06	3,79	3,84	2,73	2,04	4,16	3,06	2,30			
	└┐	7,81*	7,81*	6,80*	6,13*	5,08	3,81	4,24*	4,24*	3,69*			
	└┴┐	7,81*	7,81*	6,80*	6,13*	6,13*	5,33*	4,24*	4,24*	3,69*			



LIFTING CAPACITIES ON LONGITUDINAL AXIS



LIFTING CAPACITIES ON 360° WITHOUT SAFETY FACTOR



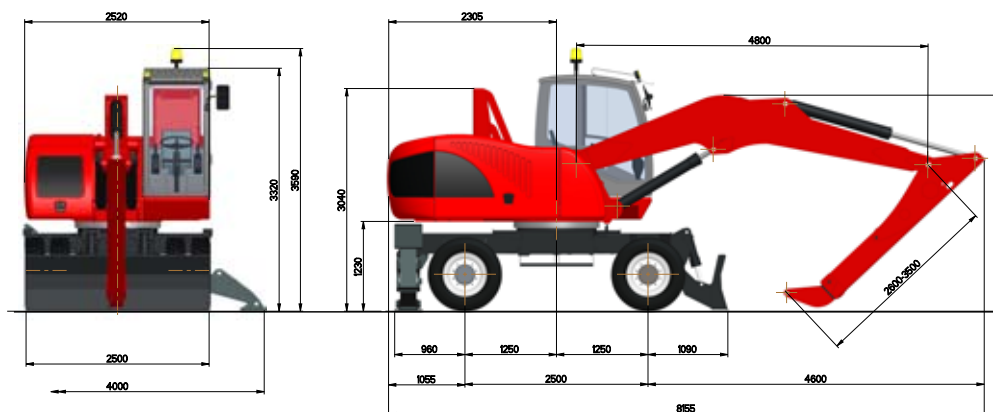
LIFTING CAPACITIES ON 360° ACCORDING WITH ISO 10567

*= HYDRAULIC LIMIT

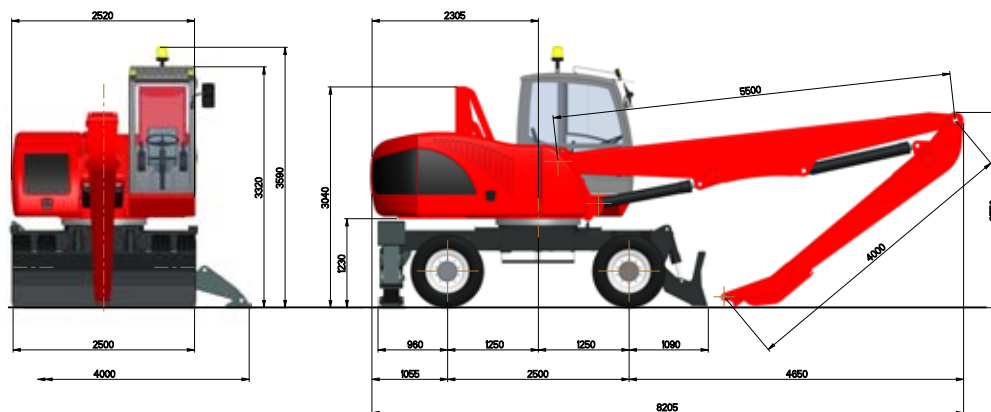
LIFTING CAPACITIES ARE ON HOOK WITHOUT GRABS, MACHINE STATIC, LEVEL SOLID GROUND, WITH AXLE LOCKED.

DIMENSIONS

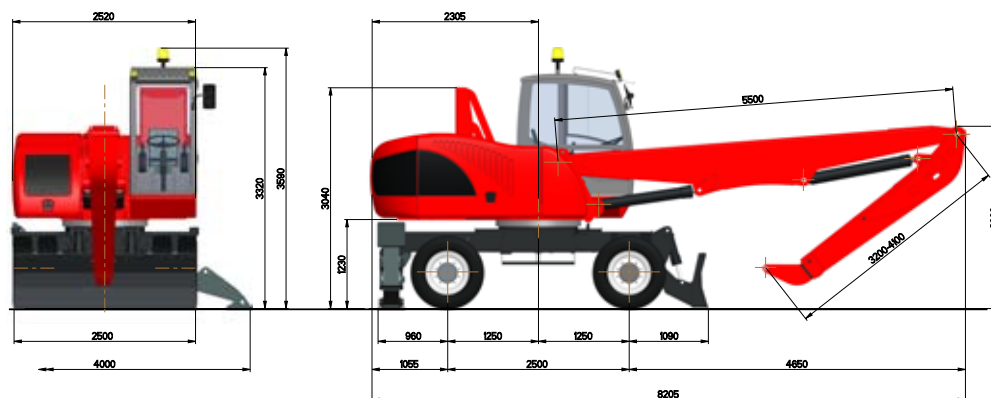
AT8



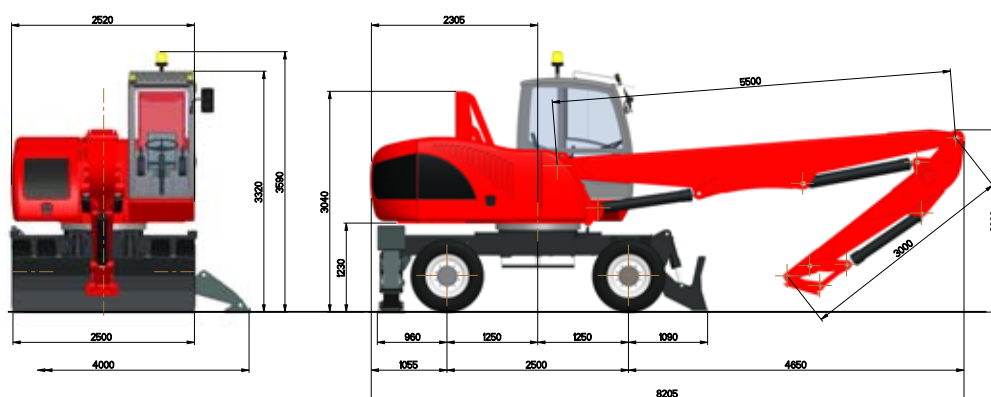
DF10



DT10



DS9



TECHNICAL DATA EXP 5020**DIESEL ENGINE**

TCD 3.6 L4 T4 – TIER 4 – Ecological with catalytic converter DVERT® and electronically controlled injection - 4 cylinders in-line - turbocharged with intercooler - common rail - direct injection - water cooled - electric starting system 24 V

Displacement:	3600cm ³
Power:	90 kW (122 CV) @ 2100 rpm
Max torque:	480 Nm @ 1600 rpm
Tank Capacity:	170 l

HYDRAULIC SYSTEM

Open circuit LOAD SENSING with variable displacement axial piston pump with oil flow adjustment according to the load requirements, 4 power levels selectable from the dashboard, distributor block composed by 6 elements electro hydraulics, with high pressure control valves and antishock valves on each element.

Max. flow:	285 l/min
Max. Pressure:	320 bar
Hydraulic tank capacity:	220 l
Hydraulic circuit capacity:	280 l

Additional pumps for auxiliary services.

Hydraulic oil cooling by means aluminium large mesh heat exchanger combined with engine radiator. Automatic reversible fan for radiator cleaning.

TRAVEL

Hydrostatic with 4 wheel drive by means of a variable displacement hydraulic axial piston motor mounted on a two speed gearbox hydraulically operated from the cab coupled to the rear axle.

Travel controlled by two separate pedals (one for each travelling direction).

Travel speed (in both directions)

Working speed:	from 0 to 6 km/h
Travel speed:	from 0 to 17 km/h

Differential axles 2,50 m wide with planetary reduction gears on the hubs.

System protected by braking and anticavitation valves.

STEERING

Hydraulic steering system powered by an independent pump. The front floating steering axle can be hydraulically locked from the cabin in any position through two hydraulic rams provided with safety valves.

BRAKES**SERVICE BRAKES:**

Multiple disc brake oil bath in the hubs controlled by hydraulic pedal.

PARKING AND EMERGENCY BRAKES: hydraulically released, multiple discs in oil bath on the transmission with electro-hydraulic control for unlocking.

TYRES

n° 8 front and rear twinned solid rubber tyres SUPERELASTIC.
-10.00 x 20 with spacer rings

n° 8 front and rear twinned "WIDE WALL" tyres.
-10.00 x 20 – 16 PR

SWING SYSTEM

Unlimited rotation in both directions by means of an axial piston hydraulic motor with integrated control valve, splined to a double stage reduction gear with oil bath gears. - Anti-shock valves protect the system.

High diameter double row ball bearing ring with internal teeth. Automatic greasing system.

Max rotation speed:	9 rpm
Overall dimensions of rotating turret:	2,34 m

OPERATOR'S CAB

Hydraulically operated raising driver's cab mounted on a parallelogram linkage installed on silent block with large windows of tinted heat resistant safety glass; front sliding window, and lateral opening window. Winter heating and air conditioned installed as standard. Radio preset. Double windscreen wiper with washer.

"GRAN COMFORT" operator's seat with shock absorbing airsuspension and 24V compressor, absorption device for horizontal and vertical vibrations, headrest, lumbar support, belt winder, electric seat heating device and armrests adjustable height and angle. Many possibilities of adjustment according to operator's weight and size with joysticks incorporated in its arms. AUTO-IDLE electronic accelerator with two automatic preselected rpm.

Color Display shows:

Engine speed indicator, fuel level, water thermometer, hour counter (partial and total), hydraulic oil temperature, Volt, oil engine pressure, fuel consumption, % engine load, engine diagnostics, and maintenance program.

Warning lights showing: air cleaner and oil filter clogging, park brake, low fuel, brakes failure, lights, hydraulic oil low level.

CONTROLS

N° 2 hydraulic controlled joysticks to carry out the main four operations.

Push button for blade and/or outriggers, for telescopic stick and/or swinging grab and grab rotator. Gear box, parking brakes, hydraulic raising of the cab, front axle oscillation lock are controlled from the dashboard.

ARMS

With reach from 8 to 10 metres; possibility to have telescopic stick or selector arm.

SOUND LEVELS

SOUND LEVELS (EEC Directives 2000/14/CE - 2005/88/CE)
Inside cab LpA 79 dB (A)

ELECTROMAGNETIC COMPATIBILITY

In accordance with CE Directive (Dir. 2014/30/CE)

OVERLOAD WARNING DEVICE

In accordance with (Dir 2006/42/CE) this device provides to check the crane stability while loading in accordance with loads and distances (as standard)

Optical warning advise danger and conditions locking movement when the stability limits are reached. Visualising of the lifting charge and the liftable charge limit, in each position.



Viale delle industrie, 9
45100 ROVIGO - ITALY
phone +39 0425 474833
fax +39 0425 475548
www.solmec.it
solmec@solmec.it