

**EXP 5025**

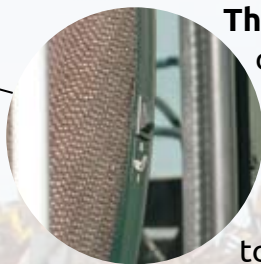




**Operators cabin** with large windows for a better visibility. The front window, with double wiper, opens, completely disappearing under the top of the cab.

An orange flashing beacon, top cab lights and lights on stick are standard fitted. It is possible, as option, to fit halogen and/or led extra lights. Finally a front window screen protection is standard fitted on the machine. As option is possible to fit also a total protection for the cabin.

**Comfortable drive** : Well pneumatically sprung, extra large seat with 10 regulation modalities, safety seat belt with winding mechanism, adjustable arms, headrest, and seat heating.



**The new EXP 5025** is a machine specifically developed for the material handling activities and with a new eye-catching design.

**The new EXP5025** is available from 8 to 12 meters reach and all the possible attachments for the material handling sectors: grabs for scrap, orange peel grabs, magnet plates, grab for logs, clamshell grabs etc.

In addition, an integrated safety device to turn on machine controls only when the operator is in driving position and the safety arm rest is in the down position. 2 taps for lower the cabin in case of emergency (one into the cabin, one easy accessible from the ground). **Standard air conditioner** with 5 vents to cool the air in the cab and to dehumidify it, avoiding windows steaming up. Heating winter and summer ventilation device are standard fitted.

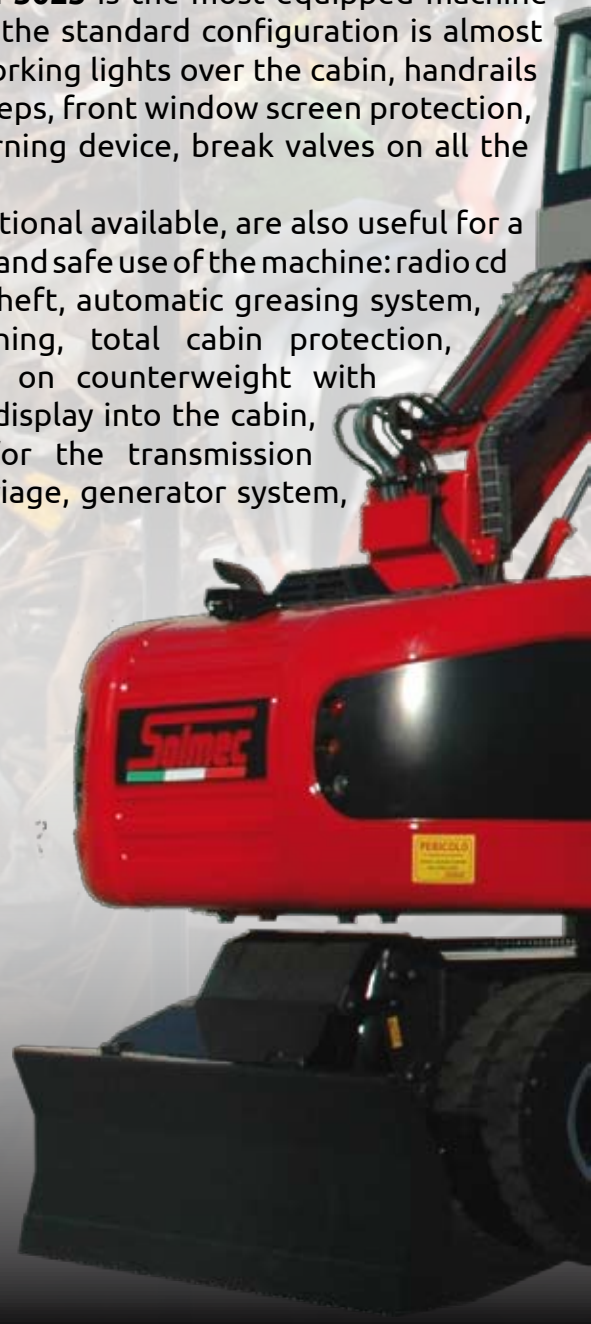


The clear visual **instrumentation panel with a coloured 5" display** allows monitoring of all machines functions: engine rpm, battery voltage, fuel level, diagnostic codes, hydraulic system, liquids levels and temperatures. There are also controls dedicated to auxiliary functions and for light warnings that advise the operator when air or hydraulic oil filters are congested, or when the machine reaches stability level, highness of the grab from the ground or distance of it from the centre of the machine, total or partial hour counter, hours from the next service, list of controls for auxiliary functions.



**The new EXP5025** is the most equipped machine in its sector, the standard configuration is almost complete: working lights over the cabin, handrails and safety steps, front window screen protection, overload warning device, break valves on all the cylinders.

The other optional available, are also useful for a comfortable and safe use of the machine: radio cd player, anti-theft, automatic greasing system, air conditioning, total cabin protection, rear camera on counterweight with 7" coloured display into the cabin, protection for the transmission on undercarriage, generator system, etc...







Operators cabin with **hydraulic parallelogram elevation** has a 5,2 m high reach (operator's eye). It is possible, on request, to arrive to 6,0 m high reach.



**Centralized automatic greasing system** (as standard), to make easier service operations. Oil tank pressurized with air filter



Six white **working lights** on counterweight as standard. On request available also road lights red and orange

As option, **rear camera** on counterweight with 7" coloured display into the cabin. It's also possible to fit a camera on the secondary stick.







**Large radiators**, in aluminium with large-meshes to allow a better thermic exchange avoiding occlusion of air passages. A thermostatic reversible fan with new aerodynamics profiles of the blades is fitted as standard : less noise, less diesel consumption, radiator always clean, less heating time in wintertime, quicker heating into the cabin in wintertime.



**Air cleaner** with self-cleaning micro- cyclones vacuum system standard included: lower maintenance time and costs, higher efficiency for the air filter, optimum working conditions for the diesel engine.



**Lockable battery box** with general on/off switch standard included

**The new EXP 5025** is environmentally friendly.

The new engine TAD571VE (Tier 4f) with SCR (AdBlue®) EGR and VGT (Variable Geometry Turbocharger) technologies, ensure a better power and torque at low rpm, low environmental impact, reduced noise and vibration, low maintenance costs (no DPF, DOC or regeneration) and low fuel consumption.

The **new cooling fan** with thermostatic control, reduces noises considerably and keeps the fluids always at the ideal temperature for a significant decrease in fuel consumption.

A device, that reverses the rotation of the fan to "blow" through the radiators and keep them clean, is installed as standard.

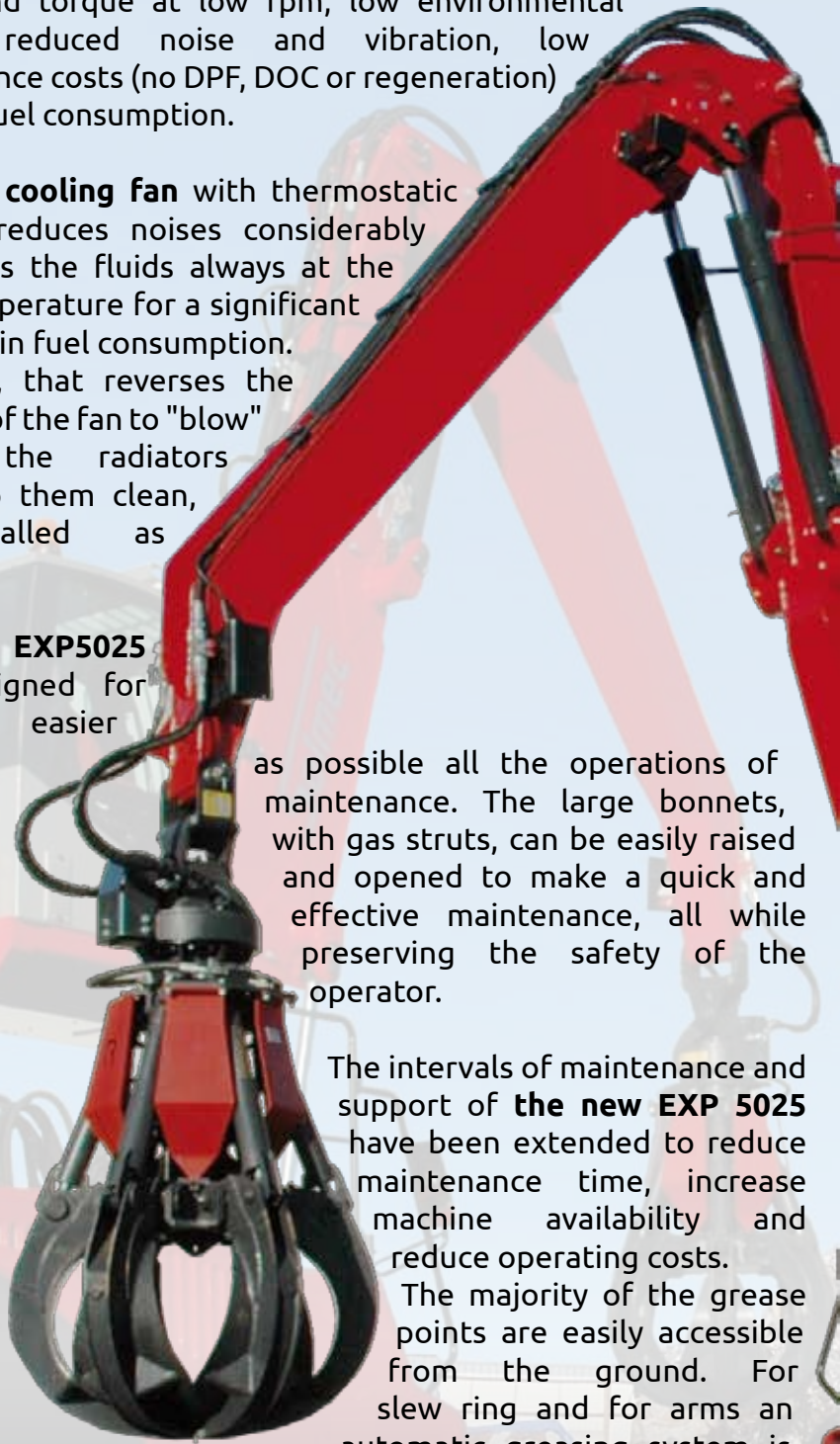
**The new EXP5025** was designed for making easier

as possible all the operations of maintenance. The large bonnets, with gas struts, can be easily raised and opened to make a quick and effective maintenance, all while preserving the safety of the operator.

The intervals of maintenance and support of **the new EXP 5025** have been extended to reduce maintenance time, increase machine availability and reduce operating costs.

The majority of the grease points are easily accessible from the ground. For slew ring and for arms an automatic greasing system is

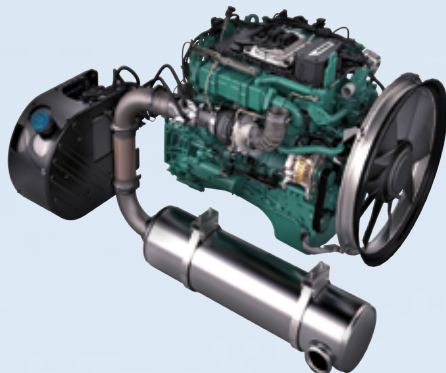
fitted as standard.





**New engine VOLVO-PENTA TAD 571VE of 129 kw (175 HP)**

- High power and torque already at low engine speed
- Low exhaust emission through SCR (AdBlue), EGR and VGT (Variable Geometry Turbocharger) technologies and Low fuel consumption.
- No DPF, DOC or regeneration.
- Compact and easy to service.
- Low operation cost.



**Handrails and wide steps** standard included, for a safer and easier access on the machine.

**The new EXP 5025** is more secure; Non-slip steps and handrails facilitate the ascent and descent of the operator from the machine.

**The new EXP 5025** (in accordance with EU directive 2006/42/EC) comes standard with the "OWD" (Overload Warning Device) system that alerts the operator with a visual and acoustic signal on the dashboard when the machine has exceeded the

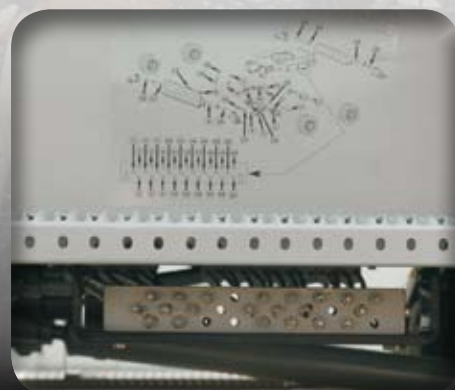


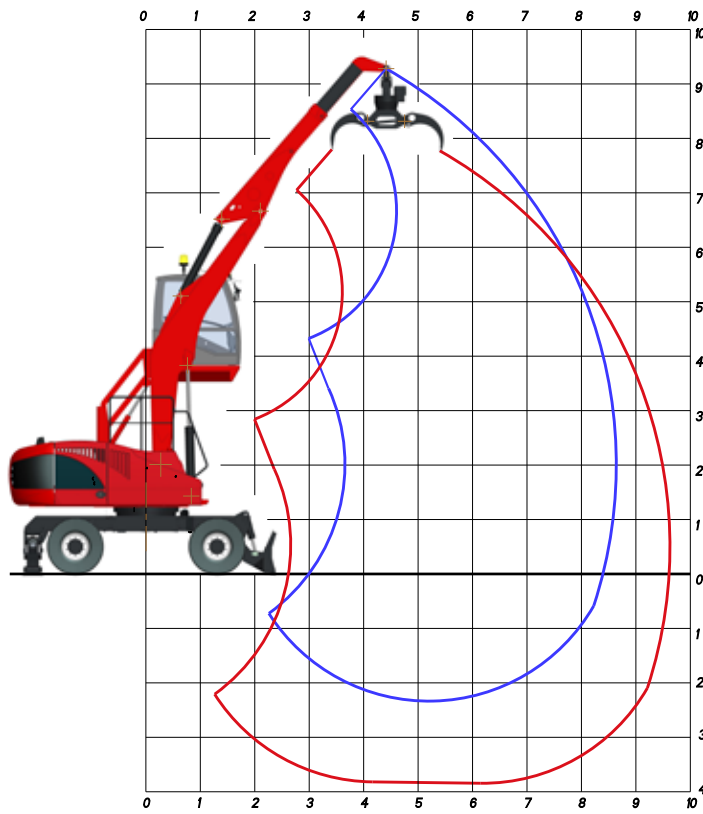
Hoses with quick coupling system for the oil change (engine and rotating joint) standard included



**Safety taps** on the diesel and oil tank for a quicker and easier maintenance of the machine

**Centralized greasing system** for the undercarriage (as option available) for an easier maintenance of the machine





**AF8:**  
Gooseneck boom  
5,00 m

**Industrial stick**  
3,50 m

**AT8**  
Telescopic stick  
2,50 m - 3,50 m

**OPERATING WEIGHT:**

**23.500 kg**

OPERATING WEIGHT WITH FRONT BLADE,  
REAR OUTRIGGERS, FULL RUBBER TYRES,  
GOOSENECK BOOM 5,00 m,  
TELESCOPIC STICK,  
R50/604 LOGS GRAB WITH ROTATOR.

## LIFTING CAPACITIES TONS

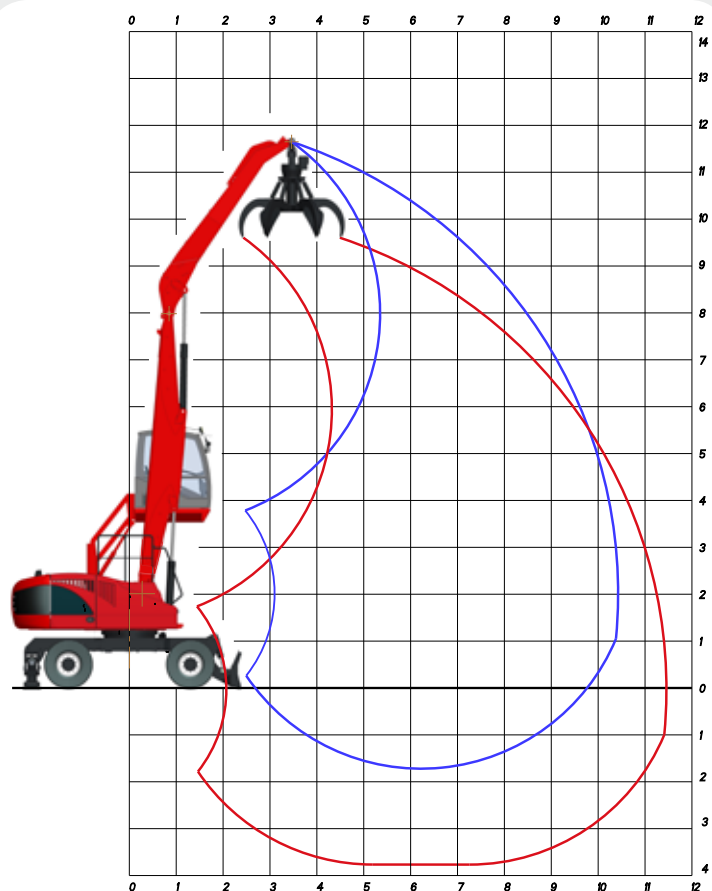
LIFTING RANGE (m)

HEIGHT METRES	CONF.	4,0			5,5			7,0			8,30		
		☞	○	⊙	☞	○	⊙	☞	○	⊙	☞	○	⊙
6,0	○○				5,40*	5,40*	4,14						
	└┐				5,40*	5,40*	4,70						
	└└				5,40*	5,40*	4,70						
4,5	○○				5,07*	5,07*	4,13	4,90*	3,76	2,82			
	└┐				5,07*	5,07*	4,41	4,90*	4,90*	4,26			
	└└				5,07*	5,07*	4,41	4,90*	4,90*	4,26			
3,0	○○	6,51*	6,51*	5,66	4,92*	4,92*	4,00	4,95*	3,70	2,78			
	└┐	6,51*	6,51*	5,66	4,92*	4,92*	4,28	4,95*	4,95*	4,31			
	└└	6,51*	6,51*	5,66	4,92*	4,92*	4,28	4,95*	4,95*	4,31			
1,5	○○	5,29*	5,29*	4,60	6,04*	5,06	3,79	5,06	3,58	2,69			
	└┐	5,29*	5,29*	4,60	6,04*	6,04*	5,26	5,16*	5,16*	4,49			
	└└	5,29*	5,29*	4,60	6,04*	6,04*	5,26	5,16*	5,16*	4,49			
0,0	○○	9,21*	7,33	5,50	6,70*	6,70*	3,58	4,92	3,45	2,59	3,81	2,67	2,00
	└┐	9,21*	9,21*	8,01	6,70*	6,70*	5,83	5,36*	5,36*	4,58	4,42*	4,42*	3,53
	└└	9,21*	9,21*	8,01	6,70*	6,70*	5,83	5,36*	5,36*	4,67	4,42*	4,42*	3,85
-1,5	○○	9,69*	6,94	5,21	6,67	4,57	3,43	4,81	3,34	2,51			
	└┐	9,69*	9,69*	8,43	6,96*	6,96*	6,05	5,38*	5,38*	4,49			
	└└	9,69*	9,69*	8,43	6,96*	6,96*	6,05	5,38*	5,38*	4,68			

☞ LIFTING CAPACITIES ON LONGITUDINAL AXIS ○ LIFTING CAPACITIES ON 360° WITHOUT SAFETY FACTOR ⊙ LIFTING CAPACITIES ON 360° ACCORDING WITH ISO 10567

\*= HYDRAULIC LIMIT

LIFTING CAPACITIES ARE ON HOOK WITHOUT GRABS, MACHINE STATIC, LEVEL SOLID GROUND, WITH AXLE LOCKED.



**DF10**  
Straight boom  
6,00 m

**Industrial stick**  
4,50 m

**OPERATING WEIGHT:**

**24.900 kg**

OPERATING WEIGHT WITH FRONT BLADE,  
REAR OUTRIGGERS, FULL RUBBER TYRES,  
STRAIGHT BOOM 6.00 M,  
INDUSTRIAL STICK 4.50 M,  
RV 500 ORANGE PEEL GRAB WITH ROTATOR

## LIFTING CAPACITIES TONS

LIFTING RANGE (m)

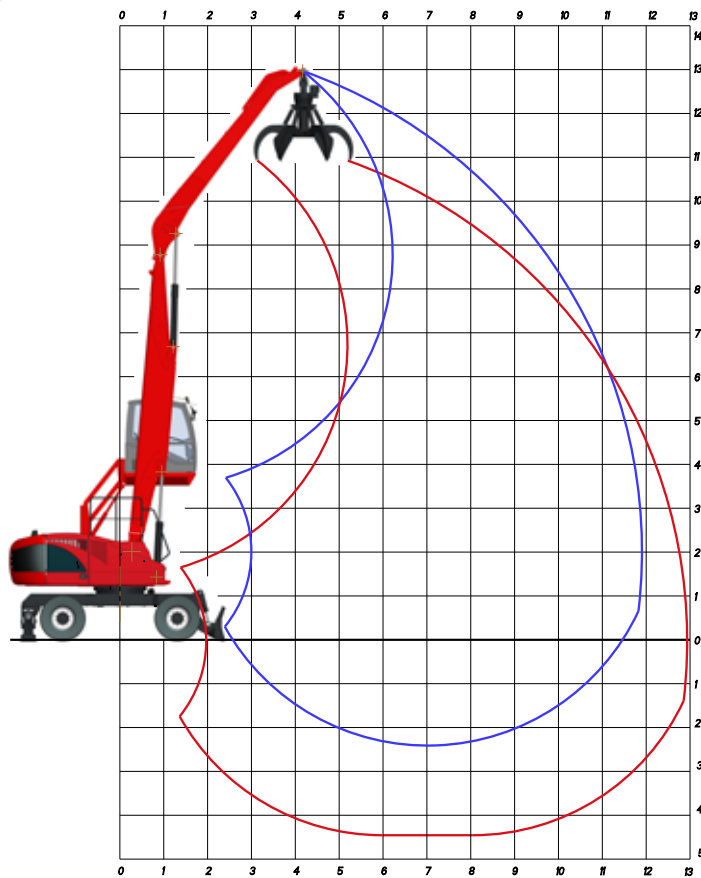
HEIGHT METRES	CONF.	3,5	5,0	6,5	8,0	9,5	10,1
		↗ ○ ↖	↗ ○ ↖	↗ ○ ↖	↗ ○ ↖	↗ ○ ↖	↗ ○ ↖
9,0	○○ └┐ └└			6,32 4,51 3,38 6,43* 6,43* 5,60 6,43* 6,43* 5,60			
7,5	○○ └┐ └└			6,36 4,54 3,41 7,39* 7,39* 5,87 7,39* 7,39* 6,43	4,56 3,23 2,42 5,97* 5,62 4,21 5,97* 5,97* 5,19		
6,0	○○ └┐ └└		8,38* 6,66 5,00 8,38* 8,38* 7,29 8,38* 8,38* 7,29	6,26 4,45 3,34 7,68* 7,68* 5,79 7,68* 7,68* 6,68	4,54 3,20 2,40 6,63* 5,59 4,19 6,63* 6,63* 5,39		
4,5	○○ └┐ └└		9,02 6,30 4,73 9,88* 9,88* 8,50 9,88* 9,88* 8,60	6,07 4,27 3,20 8,02* 7,53 5,64 8,02* 8,02* 6,98	4,44 3,10 2,33 6,73* 5,49 4,11 6,73* 6,73* 5,31	3,41 2,35 1,77 5,67* 4,23 3,17 5,67* 5,46 4,09	
3,0	○○ └┐ └└	14,80 9,67 7,26 15,5* 15,5* 13,49 15,5* 15,5* 13,49	8,50 5,82 4,37 10,81* 10,77 8,08 10,81* 10,81* 9,40	5,80 4,02 3,02 8,38* 7,24 5,43 8,38* 8,38* 7,09	4,30 2,98 2,23 6,82* 5,34 4,01 6,82* 6,82* 5,20	3,35 2,30 1,72 5,59* 4,16 3,12 5,59* 5,39 4,04	
1,5	○○ └┐ └└	8,00* 8,00* 6,38 8,00* 8,00* 6,96 8,00* 8,00* 6,96	7,96 5,34 4,00 11,31* 10,19 7,64 11,31* 11,31* 9,84	5,54 3,78 2,83 8,53* 6,97 5,22 8,53* 8,53* 6,87	4,16 2,84 2,13 6,75* 5,20 3,90 6,75* 6,75* 5,08	3,28 2,23 1,67 5,33* 4,09 3,07 5,33* 5,32 3,99	3,02 2,05 1,54 4,74* 3,78 2,83 4,74* 4,74* 3,68
0	○○ └┐ └└	5,77* 5,77* 5,02 5,77* 5,77* 5,02 5,77* 5,77* 5,02	7,60 5,01 3,76 10,83* 9,80 7,35 10,83* 10,83* 9,42	5,33 3,59 2,69 8,16* 6,75 5,06 8,16* 8,16* 6,70	4,05 2,74 2,05 6,32* 5,09 3,81 6,32* 6,32* 4,99	3,23 2,19 1,64 4,73* 4,05 3,03 4,73* 4,73* 3,95	
-1,5	○○ └┐ └└		7,45 4,87 3,65 9,18* 9,18* 7,23 9,18* 9,18* 7,98	5,23 3,49 2,62 7,07* 6,64 4,98 7,07* 7,07* 6,15			

↗ LIFTING CAPACITIES ON LONGITUDINAL AXIS ○ LIFTING CAPACITIES ON 360° WITHOUT SAFETY FACTOR ◎ LIFTING CAPACITIES ON 360° ACCORDING WITH ISO 10567

\*= HYDRAULIC LIMIT

LIFTING CAPACITIES ARE ON HOOK WITHOUT GRABS, MACHINE STATIC, LEVEL SOLID GROUND, WITH AXLE LOCKED.





**DF12:**  
**Straight boom**  
**6,80 m**

**Industrial stick**  
**5,30 m**

**OPERATING WEIGHT:**

**25.400 kg**

OPERATING WEIGHT WITH FRONT BLADE,  
REAR OUTRIGGERS, FULL RUBBER TYRES,  
STRAIGHT BOOM 6,80 m,  
INDUSTRIAL STICK 5,30 m,  
RV 500 ORANGE PEEL GRAB WITH ROTATOR

## LIFTING CAPACITIES TONS

LIFTING RANGE (m)

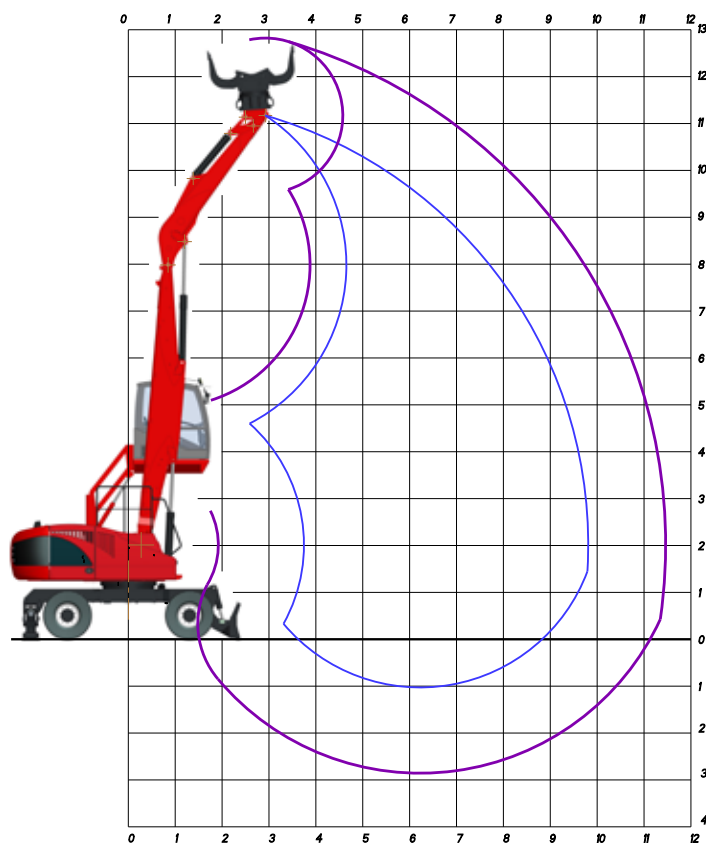
HEIGHT CONF. METRES	3,5	5,0	6,5	8,0	9,5	11,0	11,7
○ ○	↗ ○ ↖	↗ ○ ↖	↗ ○ ↖	↗ ○ ↖	↗ ○ ↖	↗ ○ ↖	↗ ○ ↖
10,5			5,78* 4,75 3,56 5,78* 5,78* 5,03 5,78* 5,78* 5,03				
9,0			6,23* 4,78 3,59 6,23* 6,23* 5,42 6,23* 6,23* 5,42	4,77 3,41 2,56 5,55 5,55 4,38 5,55 5,55 4,82			
7,5			6,57 4,73 3,55 6,63* 6,63* 5,77 6,63* 6,63* 5,77	4,76 3,40 2,55 6,15* 5,82 4,37 6,15* 6,15* 5,35	3,60 2,54 1,90 5,15* 4,43 3,32 5,15* 5,15* 4,26		
6,0			6,43 4,60 3,45 7,27* 7,27* 5,93 7,27* 7,27* 6,33	4,67 3,32 2,49 6,27* 5,73 4,30 6,27* 6,27* 5,46	3,56 2,50 1,87 5,49* 4,39 3,29 5,49* 5,49* 4,22		
4,5		8,19* 6,43 4,82 8,19* 8,19* 7,12 8,19* 8,19* 7,12	6,16 4,35 3,26 7,69* 7,62 5,72 7,69* 7,69* 6,69	4,52 3,18 2,38 6,47* 5,58 4,18 6,47* 6,47* 5,38	3,48 2,42 1,82 5,55* 4,31 3,23 5,55* 5,54 4,16	2,77 1,89 1,42 4,76* 3,44 2,58 4,76* 4,45 3,34	
3,0	14,81 9,68 7,26 15,12* 15,12* 13,16 15,12* 15,12* 13,16	8,56 5,87 4,40 10,51* 10,51* 8,14 10,51* 10,51* 9,15	5,85 4,06 3,04 8,14* 7,30 5,47 8,14* 8,14* 7,08	4,35 3,01 2,26 6,66* 5,40 4,05 6,66* 6,66* 5,24	3,38 2,32 1,74 5,59* 4,20 3,15 5,59* 5,43 4,08	2,72 1,84 1,38 4,68* 3,39 2,54 4,68* 4,39 3,30	
1,5	4,54* 4,54* 3,95 4,54* 4,54* 3,95 4,54* 4,54* 3,95	7,95 5,30 3,98 11,14* 10,19 7,64 11,14* 11,14* 9,69	5,52 3,75 2,82 8,38* 6,95 5,21 8,38* 8,38* 6,86	4,16 2,84 2,13 6,72* 5,21 3,91 6,72* 6,72* 5,09	3,28 2,22 1,67 5,53* 4,10 3,07 5,53* 5,32 3,99	2,67 1,79 1,34 4,50* 3,34 2,50 4,50* 4,34 3,25	2,46 1,64 1,23 4,07* 3,08 2,31 4,07* 4,00 3,00
0	3,57* 3,57* 3,11 3,57* 3,57* 3,11 3,57* 3,57* 3,11	7,46 4,88 3,66 10,84* 9,65 7,23 10,84* 10,84* 9,43	5,28 3,52 2,64 8,24* 6,70 5,02 8,24* 8,24* 6,66	4,01 2,70 2,02 6,53* 5,05 3,79 6,53* 6,53* 4,97	3,19 2,14 1,61 5,26* 4,01 3,01 5,26* 5,23 3,92	2,62 1,75 1,31 4,08* 3,29 2,47 4,08* 4,08* 3,22	
-1,5		7,25 4,69 3,52 9,59* 9,43 7,07 9,59* 9,59* 8,35	5,13 3,39 2,54 7,51* 6,54 4,91 7,51* 7,51* 6,53	3,92 2,61 1,95 5,94 4,95 3,71 5,94* 5,94* 4,89	3,14 2,09 1,57 4,65* 3,95 2,96 4,65* 4,65* 3,88		

↗ LIFTING CAPACITIES ON LONGITUDINAL AXIS ○ LIFTING CAPACITIES ON 360° WITHOUT SAFETY FACTOR ○ LIFTING CAPACITIES ON 360° ACCORDING WITH ISO 10567

\*= HYDRAULIC LIMIT

LIFTING CAPACITIES ARE ON HOOK WITHOUT GRABS, MACHINE STATIC, LEVEL SOLID GROUND, WITH AXLE LOCKED.





**DS10:**  
**Straight boom**  
**6,00 m**

**Selector arm**  
**3,80 m**

**OPERATING WEIGHT:**

**24.000 kg**

OPERATING WEIGHT WITH FRONT BLADE,  
REAR OUTRIGGERS, FULL RUBBER TYRES,  
STRAIGHT BOOM 6,00 m,  
SELECTOR ARM  
RS 500 SELECTOR GRAB WITH ROTATOR

## LIFTING CAPACITIES TONS

LIFTING RANGE (m)

HEIGHT METRES	CONF.	4,5			6,0			7,5			9,6		
		☞	○	⊙	☞	○	⊙	☞	○	⊙	☞	○	⊙
9,0	○○	6,81	4,83	3,62									
	└┐	6,94*	6,94*	6,04									
	└└	6,94*	6,94*	6,04									
7,5	○○	6,86	4,88	3,66	4,80	3,39	2,54						
	└┐	8,17*	8,17*	6,36	6,86*	5,93	4,44						
	└└	8,17*	8,17*	7,11	6,86*	6,86*	5,96						
6,0	○○	6,71	4,74	3,56	4,76	3,35	2,51						
	└┐	8,42*	8,32	6,24	7,08*	5,88	4,41						
	└└	8,42*	8,42*	7,32	7,08*	7,08*	6,16						
4,5	○○	6,44	4,48	3,36	4,62	3,22	2,41	3,52	2,42	1,81			
	└┐	8,95*	8,05	6,03	7,23*	5,74	4,30	5,98*	4,37	3,28			
	└└	8,95*	8,95*	7,79	7,23*	7,23*	6,29	5,98*	5,98*	4,96			
3,0	○○	6,33	4,30	3,22	4,46	3,06	2,30	3,43	2,34	1,76			
	└┐	9,62*	8,00	6,00	7,31*	5,58	4,19	5,84*	4,29	3,21			
	└└	9,62*	9,62*	8,37	7,31*	7,31*	6,36	5,84*	5,84*	4,88			
1,5	○○	6,39	4,25	3,18	4,38	2,96	2,22	3,36	2,27	1,71	2,77	1,85	1,39
	└┐	9,64*	8,17	6,13	7,08*	5,50	4,13	5,43*	4,21	3,16	4,30*	3,48	2,61
	└└	9,64*	9,64*	8,39	7,08*	7,08*	6,16	5,43*	5,43*	4,72	4,30*	4,3*	3,74
0,0	○○	6,48	4,26	3,20	4,35	2,91	2,19						
	└┐	8,28*	8,28*	6,25	6,20*	5,49	4,12						
	└└	8,28*	8,28*	7,21	6,20*	6,20*	5,39						

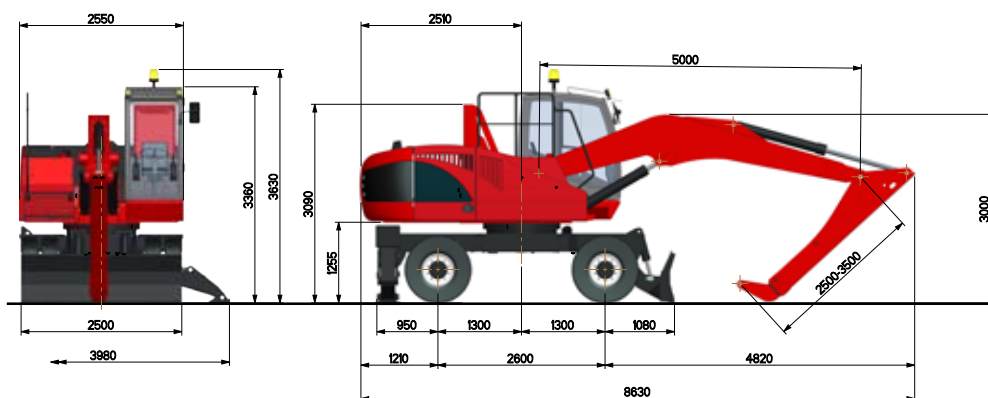
☞ LIFTING CAPACITIES ON LONGITUDINAL AXIS ○ LIFTING CAPACITIES ON 360° WITHOUT SAFETY FACTOR ⊙ LIFTING CAPACITIES ON 360° ACCORDING WITH ISO 10567

\*= HYDRAULIC LIMIT

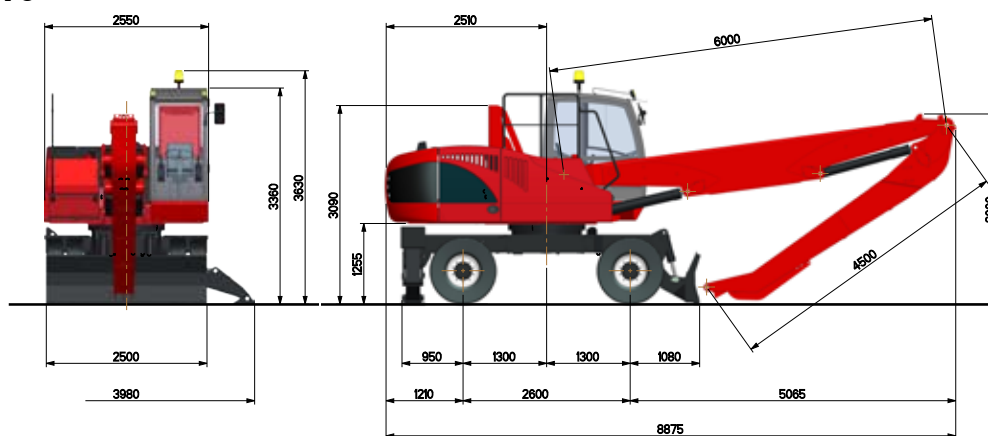
LIFTING CAPACITIES ARE ON HOOK WITHOUT GRABS, MACHINE STATIC, LEVEL SOLID GROUND, WITH AXLE LOCKED.

## DIMENSIONS

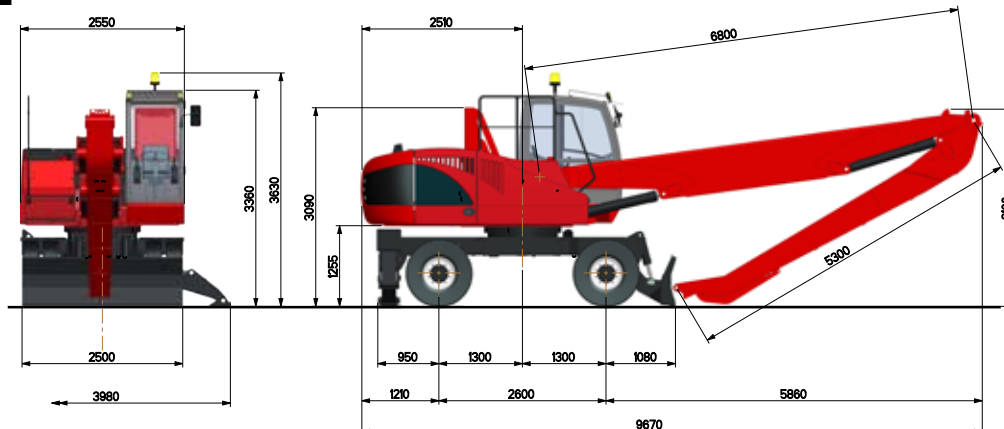
### AT8



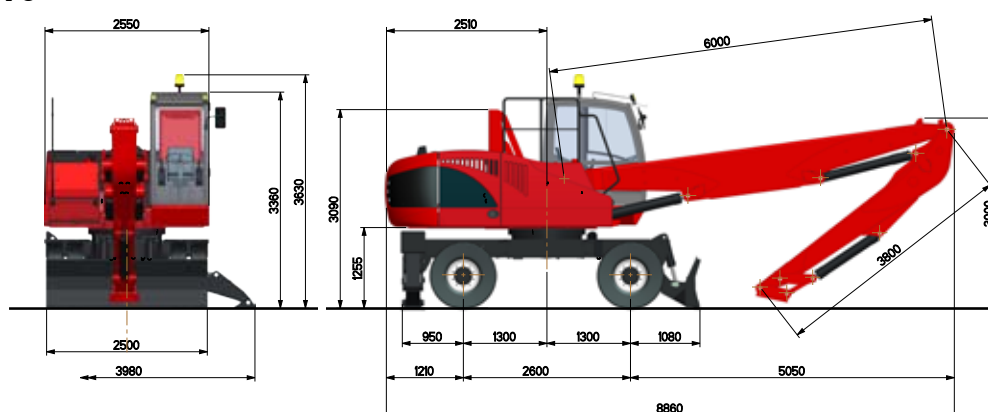
### DF10



### DF12



### DS10





## TECHNICAL DATA EXP 5025

### DIESEL ENGINE

TAD571VE – TIER 4 – Ecological with SCR and EGR technology  
Without DEP DOC and regeneration and with electronically  
controlled injection - 4 cylinders in-line - turbocharged with  
intercooler air/air - Variable Geometry Turbocharger - common  
rail - direct injection - water cooled - electric starting system  
24 V.

Displacement	5130 cm <sup>3</sup>
Power:	129 kW (175 CV) @ 2000 rpm
Max torque:	800 Nm from 1100 to 1600 rpm
Tank capacity:	290 l
Urea tank:	25 l

### HYDRAULIC SYSTEM

Open "LOAD SENSING" circuit (LUDV) constituted by a variable  
displacement axial pump, with automatic flow setting, 4  
power levels setting, feeding a distributor block composed by  
6 elements, with high pressure control valves and anti-choc  
valves on each element.

Max. flow:	350 l/min
Max. hydraulic pressure:	320 bar
Hydraulic tank capacity:	330 l
Hydraulic circuit capacity:	400 l

Additional pumps for auxiliary services.

Hydraulic oil cooling by means aluminium large mesh heat  
exchanger combined with engine and intercooler radiator.  
Automatic reversible fan for radiator cleaning.

LUDV system distributor block with simultaneous movements  
independent of the load and without interaction with  
synchronised control of all functions.

### TRAVEL

Hydrostatic with 4 wheel drive by means of a variable  
displacement hydraulic axial piston motor mounted on a two  
speed gearbox hydraulically operated from the cab coupled to  
the rear axle

Travel controlled by two separate pedals (one for each  
travelling direction).

Travel speed (in both directions)

Working speed:	from 0 to 6 km/h
Travel speed:	from 0 to 18 km/h

Differential axles 2,50 m wide with planetary reduction gears  
on the hubs.

Braking valve integrated on the hydraulic motor.

### STEERING

Hydraulic steering system powered by an independent pump.  
The front floating steering axle can be hydraulically locked  
from the cabin in any position.

### BRAKES

SERVICE BRAKES: multiple discs oil immersed on the hubs,  
hydraulically operated by the pedal.

PARKING AND EMERGENCY BRAKES: hydraulically released  
disk-type brake mounted on driveshaft.

### TYRES

n° 8 front and rear twinned solid rubber tyres SUPERELASTIC.  
- 10.00x20 with spacer rings  
On request twinned tyres  
- 10.00x20 - 16P.R.

### SWING SYSTEM

Unlimited rotation in both directions by means of an axial  
piston hydraulic motor with integrated control valve, splined  
to a double stage reduction gear with oil bath gears. - Anti-  
shock valves protect the system.

High diameter double row ball bearing ring with internal teeth.

Automatic greasing system

Max rotation speed:	8 rpm
Overall dimensions of rotating turret:	2,54 m

### OPERATOR'S CAB

Hydraulically operated raising driver's cab mounted on a  
parallelogram linkage installed on silent block with large  
windows of tinted heat resistant safety glass; front sliding  
window, and lateral opening window, upper glass with safety  
grill. Winter heating and air conditioned installed as standard.  
Radio preset. Double windscreen wiper with washer.

"GRAN COMFORT" operator's seat with shock absorbing  
suspension, headrest, lumbar support, belt winder, electric  
seat heating device and armrests adjustable height and angle.  
Many possibilities of adjustment according to operator's  
weight and size with joysticks incorporated in its arms. AUTO-  
IDLE electronic accelerator with two automatic preselected  
rpm.

The instrumentation, consisting of a color display on the  
dashboard, indicates includes:

Engine speed indicator, fuel level, water thermometer. Display  
shows: hour counter, hydraulic oil temperature, Volt, oil engine  
pressure, fuel consumption, load rate of the engine, engine  
diagnostics, and maintenance program.

Warning lights showing: air cleaner and oil filter clogging, park  
brake, low fuel, brakes failure, lights, hydraulic oil low level,  
clogging of the particulate filter (DPF)...

### CONTROLS

N° 2 electronic controlled joysticks to carry out four operations  
each with electric pushbuttons incorporated.

Electronics proportional rollers for front blade a/o outriggers  
and telescopic/selector arm. Electric button for grab rotator.  
Electro hydraulic devices for controlling hydraulic raising of  
the cab, parking brakes, front axle oscillation lock, gear box.

### ARMS

With reach from 8 to 12 metres.

### SOUND LEVELS

SOUND LEVELS (EEC Directive 2000/14/CE - 2005/88/CE)	
Inside cab	LpA 76 dB (A)

### ELECTROMAGNETIC COMPATIBILITY

In accordance with CE Directive (Dir. 2014/30/CE)

### OVERLOAD WARNING DEVICE

In accordance with CE directive (Dir 2006/42/CE) this device  
provides to check the crane stability while loading in accordance  
with loads and distances (as standard). When the stability limits  
are reached, acoustical and optical warning advise danger  
conditions before the automatic lock of movements.



Viale delle industrie, 9  
45100 ROVIGO - ITALY  
phone +39 0425 474833  
fax +39 0425 475548  
[www.solmec.it](http://www.solmec.it)  
[solmec@solmec.it](mailto:solmec@solmec.it)