



EXP 5045



Operators cabin with large windows for a better visibility. The front window, with double wiper, opens, completely disappearing under the top of the cab.

An orange flashing beacon, standard fitted, on the top of the cab guarantee a good visibility also during the darker hours of the day. It is possible, as option, to fit extra working lights on stick and on the undercarriage to increase visibility. Also a front window screen protection and extra lights on secondary stick are standard fitted on the machine. As option is possible to fit also a total protection for the cabin and xenon lights on stick and over the cabin.

Comfortable drive : Well pneumatically sprung, extra large seat with 10 regulation modalities,



safety seat belt with winding mechanism, adjustable arms, head-rest, and seat heating.

In addition, an integrated safety device to turn on machine controls only when the operator is in driving position and the safety arm rest is in the down position. 2 taps for lower the cabin in case of emergency (one into the cabin, one easy accessible from the ground). **Standard air conditioner** with 5 vents to cool the air in the cab and to dehumidify it, avoiding windows steaming up. Heating winter and summer ventilation device are standard fitted.



The clear visual **instrumentation panel with a coloured 5" display** allows monitoring of all machines functions: engine rpm, battery voltage, fuel level, diagnostic codes, hydraulic system, liquids levels and temperatures. There are also controls dedicated to auxiliary functions and for light warnings that advise the operator when air or hydraulic oil filters are congested, or when the machine reaches stability level, highness of the grab from the ground or distance of it from the centre of the machine, total or partial hour counter, hours from the next service, list of controls for auxiliary functions.



TCD 6.1 - Stage V ready

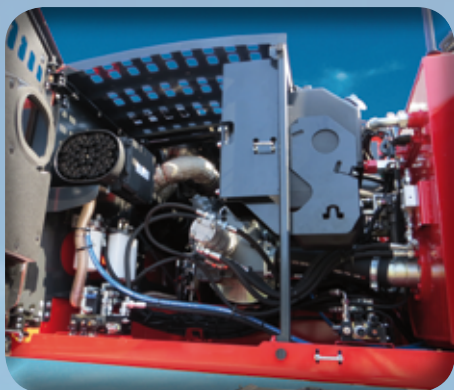
Water-cooled 4-cylinder inline engine with cooled, external exhaust gas recirculation with turbocharging and with charge air cooling.

Engine and exhaust aftertreatment (EAT) are optimised for highest total system efficiency and thus ensure lowest consumption and total operating cost.

The powerful Common Rail (DCR®) injection system and the electronic engine control (EMR) with intelligent link to the drive management ensure optimum engine performance at low fuel consumption.

The engines meet the requirements of the EU Stage IV and US EPA Tier 4 with DVERT® selective catalytic reduction (SCR) and particulate filter (DPF). Through the use of the DPF they already comply with the EU Stage V emissions standard.

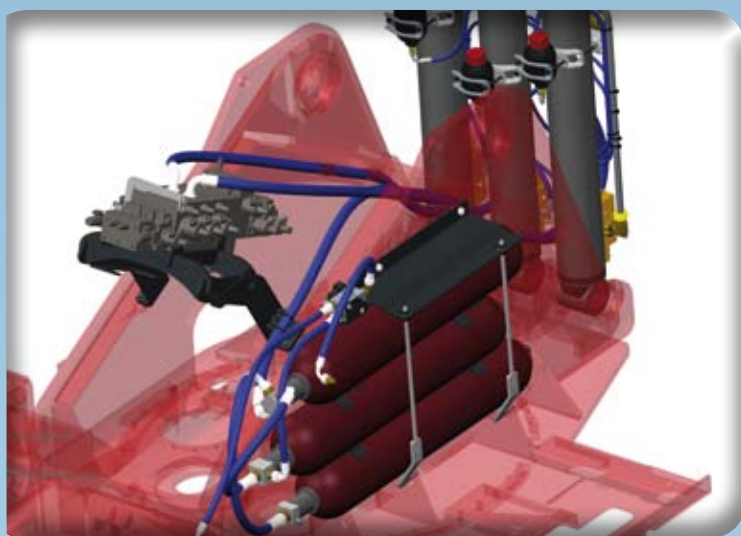
Long oil change intervals and easy changing of the engine fluids reduce the running cost and increase the availability of the machinery.



The new large carpentries with auto-locking system ensures an easy access to the engine and all the components



Centralized automatic greasing system (as standard), to make easier service operations.



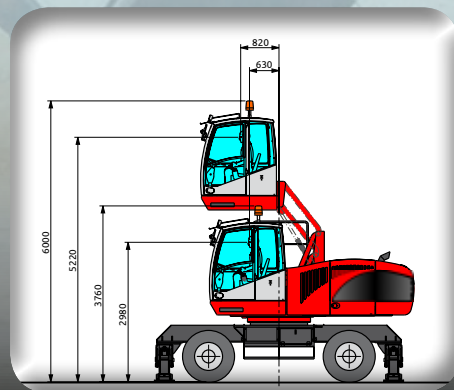
Load Energy Saving System (LESS)

It's an hydro-pneumatic system of the machine passive weights support, it is constituted by a conventional hydraulic ram, connected directly to a series of hydro-pneumatic accumulators which guarantee a direct hydraulic force to the hydraulic ram. A multi-function solenoid valve unit, electronically managed, controls the correct functionality and the pre-charge pressure of the system. Through this system, the hydraulic power used for the handling of the load is real. In the exclusive movement of the primary arm, the saved fuel can reach up to 50%, in work combined movements, the economy is around 20%.

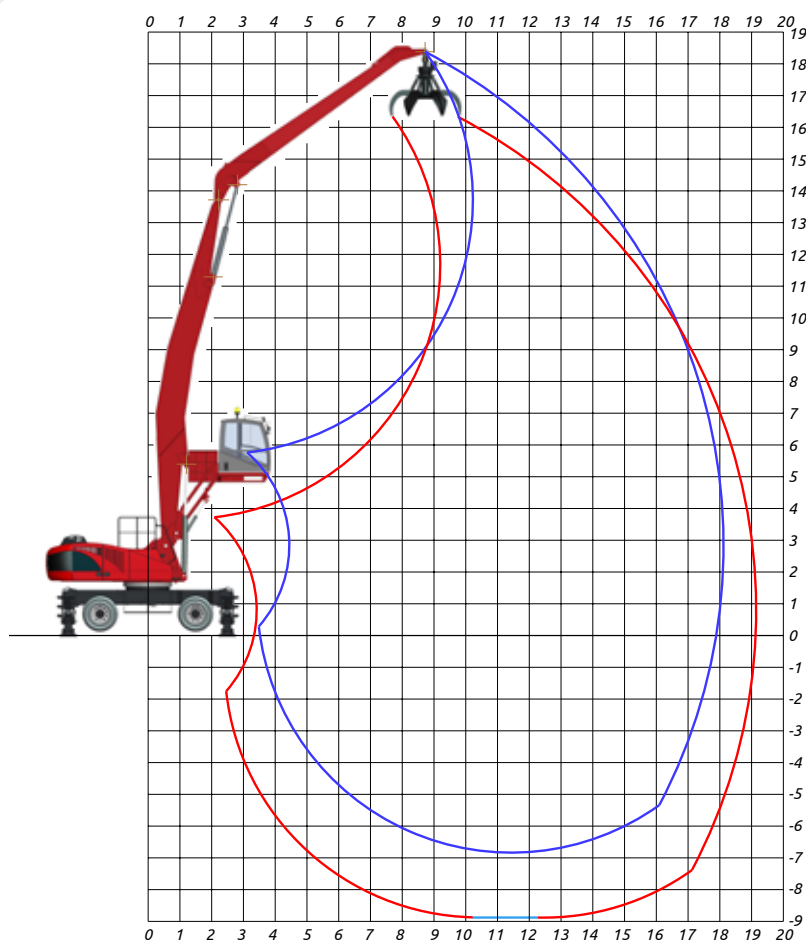


Six white **working lights** on counterweight as standard. On request available also road lights red and orange

Rear camera on counterweight with 7" coloured display into the cabin. It's also possible to fit a camera on the secondary stick.



Operators cabin with **hydraulic parallelogram elevation** has a 5,2 m high reach (operator's eye).



AF18:
Gooseneck boom
11,00 m

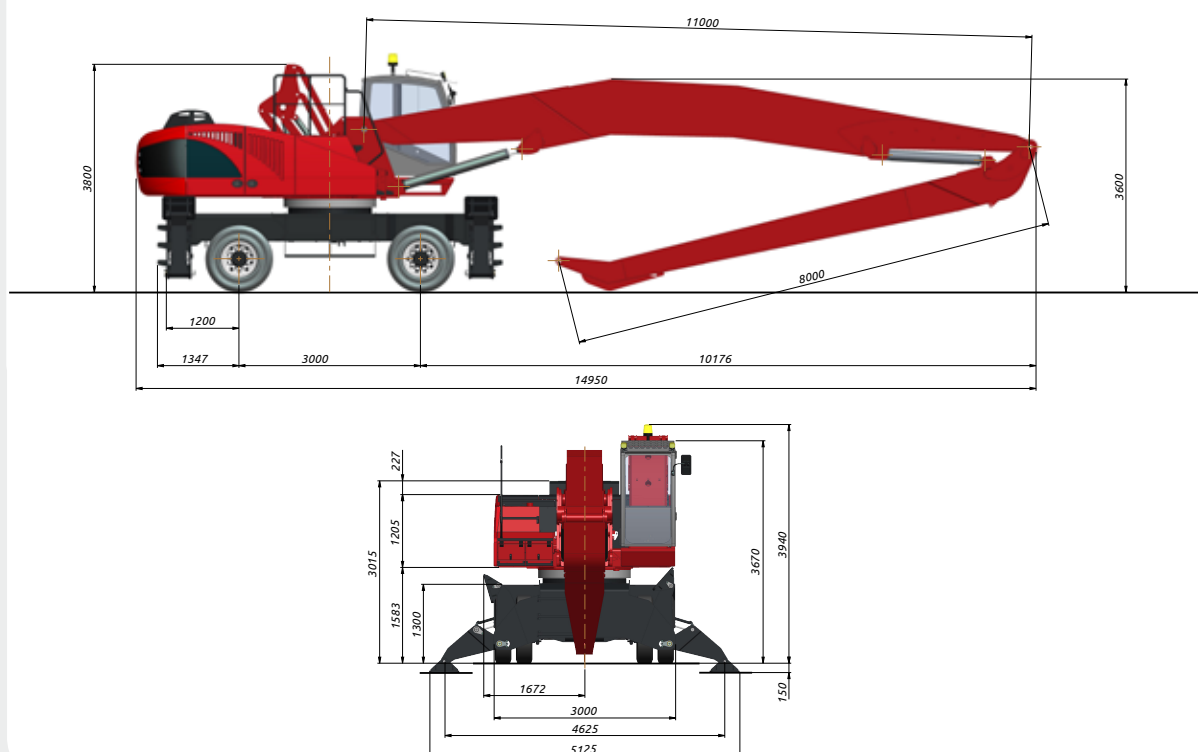
Industrial stick
8,00 m

OPERATING WEIGHT:

45.000 kg

OPERATING WEIGHT WITH, 4
OUTRIGGERS, FULL RUBBER TYRES,
STRAIGHT BOOM 11,00 m,
DIPPER STICK 8,00 m,
RV 800 ORANGE PEEL GRAB AND
ROTATOR.

DIMENSIONS



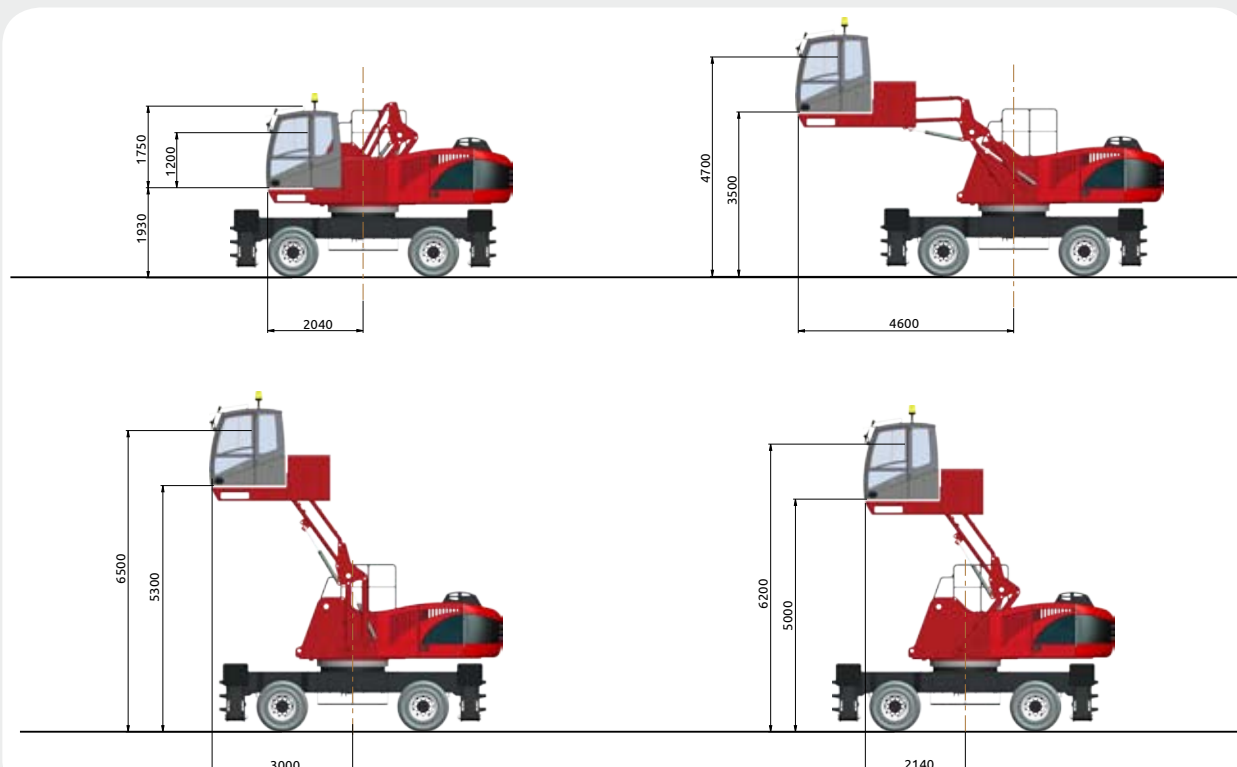
LIFTING CAPACITIES TONS

LIFTING RANGE (m)

		5,50			7,50			10,5			13,5			16,50			18,1		
H	Stab	↗	○	⊙	↗	○	⊙	↗	○	⊙	↗	○	⊙	↗	○	⊙	↗	○	⊙
15	○○ ┃┃ ┃┃							5,63*	5,63*	4,9*	4,57*	4,08	3,06						
	┃┃							5,63*	5,63*	4,9*	4,57*	4,57*	3,97*						
	┃┃							5,63*	5,63*	4,9*	4,57*	4,57*	3,97*						
12	○○ ┃┃ ┃┃							5,57*	5,57*	4,84*	4,87*	4,17	3,12						
	┃┃							5,57*	5,57*	4,84*	4,87*	4,87*	4,24*						
	┃┃							5,57*	5,57*	4,84*	4,87*	4,87*	4,24*						
9	○○ ┃┃ ┃┃							5,91*	5,91*	4,89	5,02*	3,97	2,98	3,68	2,42	1,81			
	┃┃							5,91*	5,91*	5,14*	5,02*	5,02*	4,37*	4,48*	4,48*	3,70			
	┃┃							5,91*	5,91*	5,14*	5,02*	5,02*	4,37*	4,48*	4,48*	3,90*			
6	○○ ┃┃ ┃┃	11,85*	11,85*	10,31*	8,85*	8,85*	7,37	6,59*	5,70	4,28	5,17	3,55	2,66	3,51	2,25	1,68			
	┃┃	11,85*	11,85*	10,31*	8,85*	8,85*	7,70*	6,59*	6,59*	5,73*	5,35*	5,35*	4,65*	4,78*	4,77*	3,58			
	┃┃	11,85*	11,85*	10,31*	8,85*	8,85*	7,70*	6,59*	6,59*	5,73*	5,35*	5,35*	4,65*	4,78*	4,78*	4,16*			
3	○○ ┃┃ ┃┃	7,34*	7,34*	6,39*	10,70*	7,47	5,60	6,81	4,61	3,46	4,64	3,03	2,28	3,23	1,98	1,49	2,66	1,54	1,15
	┃┃	7,34*	7,34*	6,39*	10,70*	10,70*	9,31*	7,36*	7,36*	6,41*	5,79*	5,79*	4,70	5,00*	4,49	3,37	4,50*	3,77	2,83
	┃┃	7,34*	7,34*	6,39*	10,70*	10,70*	9,31*	7,36*	7,36*	6,41*	5,79*	5,79*	5,04*	5,00*	5,00*	4,26	4,50*	4,50*	3,62
0	○○ ┃┃ ┃┃	3,85*	3,85*	3,35*	9,05	5,66	4,25	5,91	3,74	2,80	4,12	2,53	1,90	2,96	1,72	1,29			
	┃┃	3,85*	3,85*	3,35*	11,15*	11,15*	9,54	8,18*	8,17	6,13	6,18*	5,72	4,29	5,01*	4,21	3,15			
	┃┃	3,85*	3,85*	3,35*	11,15*	11,15*	9,70*	8,18*	8,18*	7,11*	6,18*	6,18*	5,38*	5,01*	5,01*	4,04			
-3	○○ ┃┃ ┃┃	4,89*	4,89*	4,26*	8,37	5,00	3,75	5,33	3,19	2,39	3,79	2,22	1,66	2,84	1,59	1,19			
	┃┃	4,89*	4,89*	4,26*	8,76*	8,76*	7,62*	8,52*	7,55	5,66	6,4*	5,39	4,04	5,02*	4,08	3,06			
	┃┃	4,89*	4,89*	4,26*	8,76*	8,76*	7,62*	8,52*	8,52*	7,29	6,4*	6,40*	5,19	5,02*	5,02*	3,95			
-6	○○ ┃┃ ┃┃				8,31	4,95	3,71	5,21	3,07	2,30	3,70	2,13	1,60						
	┃┃				9,58*	9,58*	8,34*	8,22*	7,44	5,58	6,08*	5,29	3,97						
	┃┃				9,58*	9,58*	8,34*	8,22*	8,22*	7,15*	6,08*	6,08*	5,11						

↗ LIFTING CAPACITIES ON LONGITUDINAL AXIS ○ LIFTING CAPACITIES ON 360° WITHOUT SAFETY FACTOR ⊙ LIFTING CAPACITIES ON 360° ACCORDING WITH ISO 10567

* = HYDRAULIC LIMIT - LIFTING CAPACITIES ARE ON HOOK WITHOUT GRABS, MACHINE STATIC, LEVEL SOLID GROUND, WITH AXLE LOCKED.

"PANORAMA" CABIN - DOUBLE STAGE ELEVATION (AS OPTION)

ACCESSORIES

ACCESSORIES	As STANDARD	As OPTIONAL
- N° 8 TWINNED SOLID RUBBER TYRES WITH SPACER RUBBER RINGS	•	
- CENTRALIZED GREASING SYSTEM FOR THE UNDERCARRIAGE		•
- GEAR AND CARDAN JOINT PROTECTION		•
- PARALLELOGRAM ELEVATION CABIN H 5200	•	
- PARALLELOGRAMELEVATION CABIN H 6000		•
- "PANORAMA" ELEVATION CABIN H 6500		•
- OPERATOR SEAT WITH PNEUMATIC SUSPENSION AND HEATING DEVICE	•	
- SAFETY SEAT BELT	•	
- AIR-CONDITIONING SYSTEM	•	
- AIR-CONDITIONING FILTER WITH ACTIVATED CHARCOAL		•
- RADIO CD PLAYER		•
- RADIO CD PLAYER WITH BLUETOOTH®		•
- WEIGHTING SYSTEM		•
- ANTI-THEFT "MED" IMMOBILIZER DEVICE		•
- TWO WORKING LIGHTS OVER THE CABIN	•	
- TWO WORKING LED LIGHTS OVER THE CABIN		•
- FRONT WINDOW SCREEN PROTECTION	•	
- TOTAL PROTECTION FOR THE CABIN		•
- AUTOMATIC GREASING SYSTEM FOR THE UPPERSTRUCTURE	•	
- THERMOSTATIC AUTOMATIC REVERSIBLE FAN	•	
- GENERATOR SYSTEM		•
- WORKING LIGHTS ON SECONDARY STICK	•	
- WORKING LED LIGHTS ON SECONDARY STICK		•
- DIPPER PROXIMITY AND HEIGHT LIMIT DEVICES	•	
- SAFETY VALVES ON ALL THE CYLINDERS	•	
- OVERLOAD WARNING DEVICE	•	
- SIX WHITE WORKING LIGHTS ON COUNTERWEIGHT	•	
- EXTRA WORKING LIGHTS ON UPPERSTRUCTURE		•
- TOWING HOOK		•
- STEERING ON JOYSTICK		•
- ADDITIONAL HEATING SYSTEM FOR COLD WEATHER COUNTRIES		•
- HYDRAULIC FILTER SYSTEM ON THE RETURN LINE OF THE GRAB		•
- CAMERA WITH 7" COLOURED DISPLAY INTO THE CABIN		•
- FUEL AND HYDRAULIC OIL REFILLING PUMPS		•

TECHNICAL DATA EXP 5045

DIESEL ENGINE

TCD 6.1 L6 4V - T4 (tier 4 final) – Ecological with catalytic converter DVERT®,DPF+SCR® and emissions controlled with electronically controlled injection – 6 cylinders in-line – 4 valves - turbocharged with intercooler air/air - common rail - direct injection - water cooled - electric starting system 24 V.

Displacement	6060 cm ³
Power:	180 kW (241 CV) @ 1800 rpm
Max torque:	1000 Nm @ 1450 rpm
Tank capacity:	310 l

HYDRAULIC SYSTEM

Open circuit LOAD SENSING + SYNCRON CONTROL

Variable displacement axial piston pumps with oil flow adjustment according to the load requirements and with electro-hydraulic engine speed regulation.

Max. flow:	540 l/min
Max. hydraulic pressure:	330 bar
Hydraulic tank capacity:	400 l
Hydraulic circuit capacity:	490 l

Four additional pumps for auxiliary services. Hydraulic oil cooling by means aluminium large mesh heat exchanger combined with engine radiator. Automatic reversible fan for radiator cleaning.

LOAD SENSING system distributor block with simultaneous movements independent of the load and without interaction with synchronised control of all functions.

The third boosted boom ram of the "Load Energy Saving System" (LESS) can reduce the fuel consumption more than 20%.

TRAVEL

Hydrostatic with 4 wheel drive by means of a variable displacement hydraulic axial piston motor mounted on a two speed gearbox hydraulically operated from the cab coupled to the rear axle

Travel controlled by two separate pedals (one for each travelling direction).

Travel speed (in both directions)

Working speed:	from 0 to 6 km/h
Travel speed:	from 0 to 18 km/h

Differential axles 3,00 m wide with planetary reduction gears on the hubs.

Braking valve integrated on the hydraulic motor.

STEERING

Hydraulic steering system powered by an independent pump. The front floating steering axle can be hydraulically locked from the cabin in any position.

TYRES

N° 8 twinned full rubber tyres "SUPERELASTIC" front and rear.

- 12.00 x 20 (with rubber spacer rings)

N° 8 front and rear twinned pneumatic tyres type "X MINE® D2"

12.00 x 20 - 20 PR

ARMS

11,0 m gooseneck boom and 8,0 m dipper stick

BRAKES

SERVICE BRAKES: Multiple disc brake oil bath on the rear axle.

PARKING AND EMERGENCY BRAKES: hydraulically released, multiple discs in oil bath on the rear axle with electrohydraulic control for unlocking.

SWING SYSTEM

Unlimited rotation in both directions by means of 2 axial piston hydraulic motors controlled by a main valve. Each motor are splined to a double stage reduction gear with oil bath gears. - Anti-shock valves protect the system.

High diameter double row ball bearing ring with internal teeth. Automatic greasing system

Max rotation speed:	7 rpm
Overall dimensions of rotating turret:	3,30 m

OPERATOR'S CAB

Hydraulically operated raising driver's cab mounted on a parallelogram linkage installed on silent block with large windows of tinted heat resistant safety glass; front sliding window, and lateral opening window. Winter heating and air conditioned installed as standard. Radio preset. Double windscreen wiper with washer.

"GRAN COMFORT" operator's seat with shock absorbing suspension, headrest, lumbar support, belt winder, electric seat heating device and armrests adjustable height and angle. Many possibilities of adjustment according to operator's weight and size with joysticks incorporated in its arms. AUTO-IDLE electronic accelerator with two automatic preselected rpm.

The instrumentation includes:

Engine speed indicator, fuel level, water thermometer. Display shows: hour counter, hydraulic oil temperature, Volt, oil engine pressure, fuel consumption, engine diagnostics, and maintenance program.

Warning lights showing: air cleaner and oil filter clogging, park brake, low fuel, brakes failure, lights, hydraulic oil low level.

HYDRAULIC CONTROLS

N° 2 electronical controlled joysticks to carry out four operations each with electric pushbuttons incorporated. Electro switch for grab rotator. Proportional electric roller for outriggers and/or front blade. Electro switch for magnet (if installed). Keyboard with electro switches for for controlling gear box, parking brakes, hydraulic raising of the cab, front axle oscillation lock.

SOUND LEVELS

SOUND LEVELS (EEC Directive 2000/14/CE)
Inside cab LpA 79 dB (A)

ELECTROMAGNETIC COMPATIBILITY

In accordance with CE Directive (Dir. 2004/108/CE)

OVERLOAD WARNING DEVICE

In accordance with (Dir 2006/42/CE) this device provides to check the crane stability while loading in accordance with loads and distances (as standard)

Optical warning advise danger and conditions locking movement when the stability limits are reached. Visualising of the lifting charge and the liftable charge limit, in each position.



Viale delle industrie, 9
45100 ROVIGO - ITALY
phone +39 0425 474833
fax +39 0425 475548
www.solmec.it
solmec@solmec.it