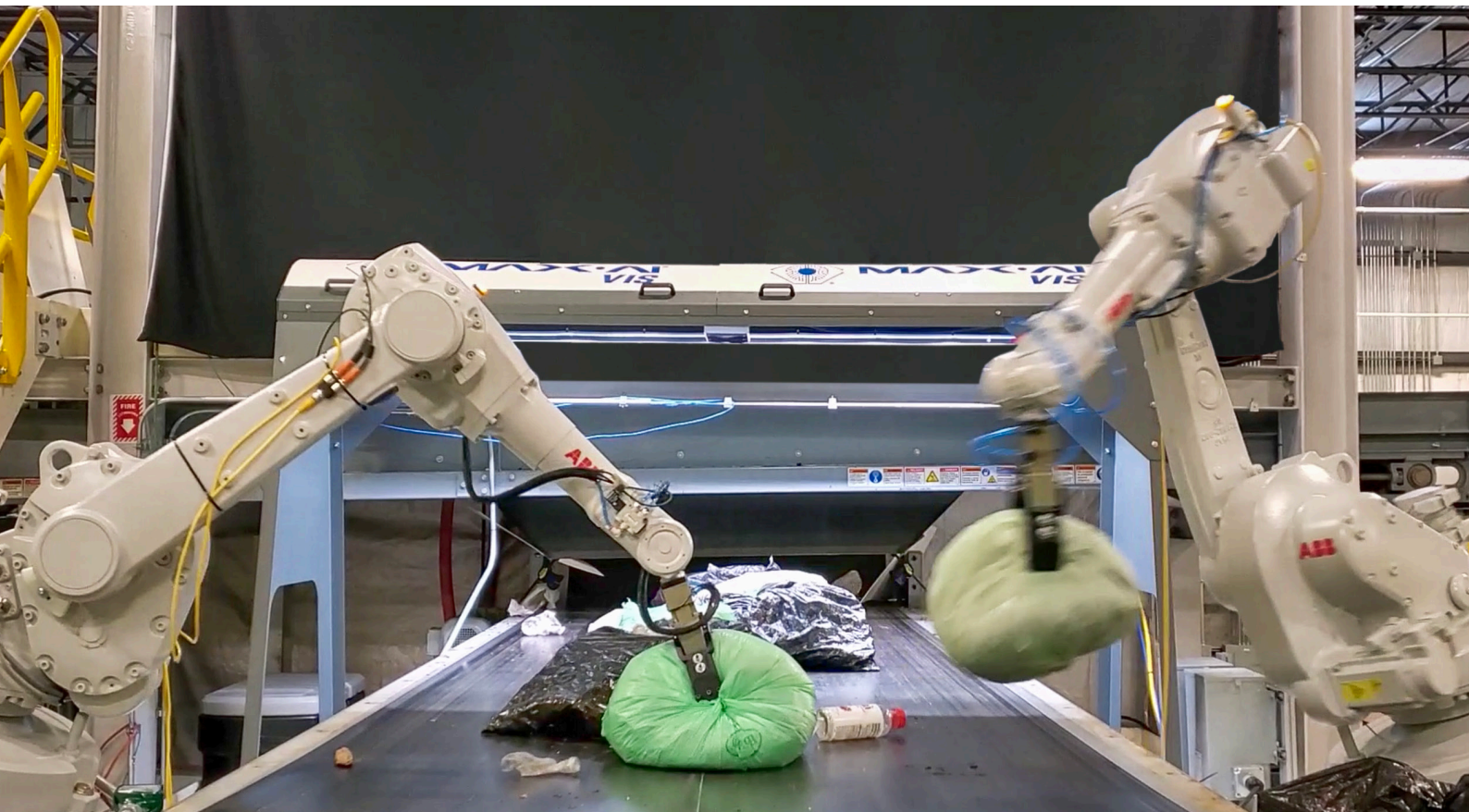




AQC-Flex



MAX-AI[®]
AQC-Flex

Max-AI[®] AQCs (for Autonomous Quality Control) are the ultimate in sort automation. **The AQC-Flex** is comprised of Max-AI VIS (for Visual Identification System) and two robotic pickers, capable of lifting objects up to 15 lbs. This robotic sorter excels in areas where heavy and/or non-uniform objects are present within a material stream such as pre-sort and post-sort areas in a wide variety of applications.

The AQC-Flex makes multiple sorting decisions autonomously, using a machine vision system to see the material, specialized artificial intelligence to think and identify each item, and robotic sorters to pick targeted items or contamination. For example, the **AQC-Flex** can pick black trash bags from other colored bags and incoming material in a pre-sort area.

Max-AI AQCs provide MRF operators with sustained and consistent sorting performance while improving safety, recovery, product quality and operational expenses.

Able to grasp objects up to 6.8 kg including non-uniform material

Up to three separate sorts from a single robot

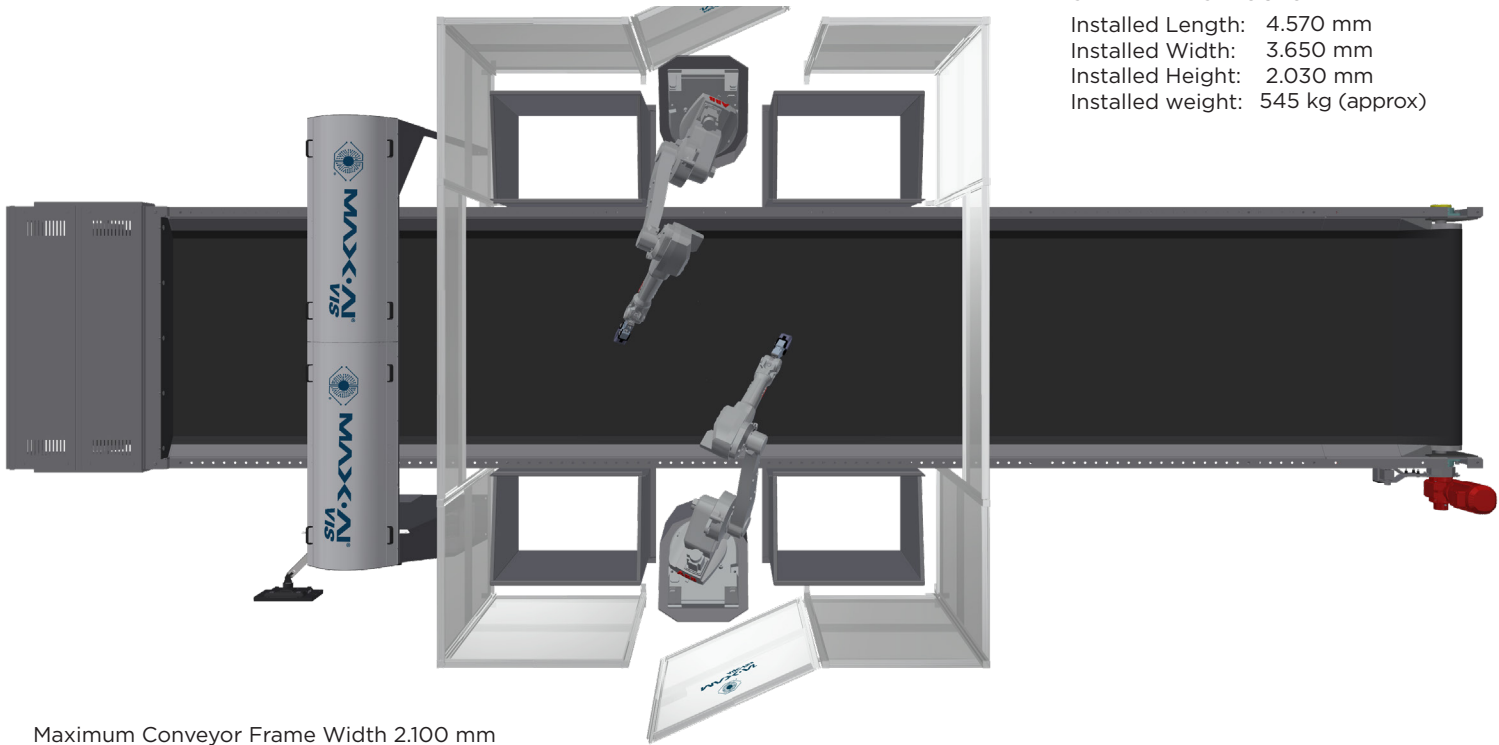
Picks are prioritized by material type. Priorities are easily adjusted when market conditions change

Advanced neural networks can be retrained to identify new materials as waste streams change

Can be installed in existing MRFs with little down time

Improves plant safety by eliminating human contact with waste and injuries associated with lifting heavy items off conveyors

max-ai.com



STANDARD STRUCTURE
 Installed Length: 4.570 mm
 Installed Width: 3.650 mm
 Installed Height: 2.030 mm
 Installed weight: 545 kg (approx)

Maximum Conveyor Frame Width 2.100 mm
 Maximum Sorting Belt Width 1.820 mm
 Sorting Range 1.016 mm each robot

Technical Specifications (2 robots)

Model	AQC-Flex
Identifiable Materials	Plastics & metal containers, paper, cardboard, cartons, residue
Sorting Speed	Up to 35 picks per minutes per robot arm
Number of Sorts	Up to 3 separate sorts per robot
Air Consumption	2,3 m ³ /min @ 6,9 BAR
Required Air Supply	Filtered and Dry Air, Pressure: 6,9 BAR, ISO 8573.1 Class 1.4.2
Voltage, VAC 50/60 Hz, Three Phase	460V
Main Circuit Breaker	25A
Full Load Amperage (FLA)	19A
Power Consumption @ FLA	8.75 kW
Maximum Object Weight	6.8 kg
Grasping options	Mechanical gripper, vacuum gripper
Sorting Conveyor Speed	0,5 - 1,0 m/sec.
Suitable Operating Environment	Indoors only; 2-37°C

Max-AI® | +31 (0)20 58 220 30 | sales@max-ai.com | max-ai.com

